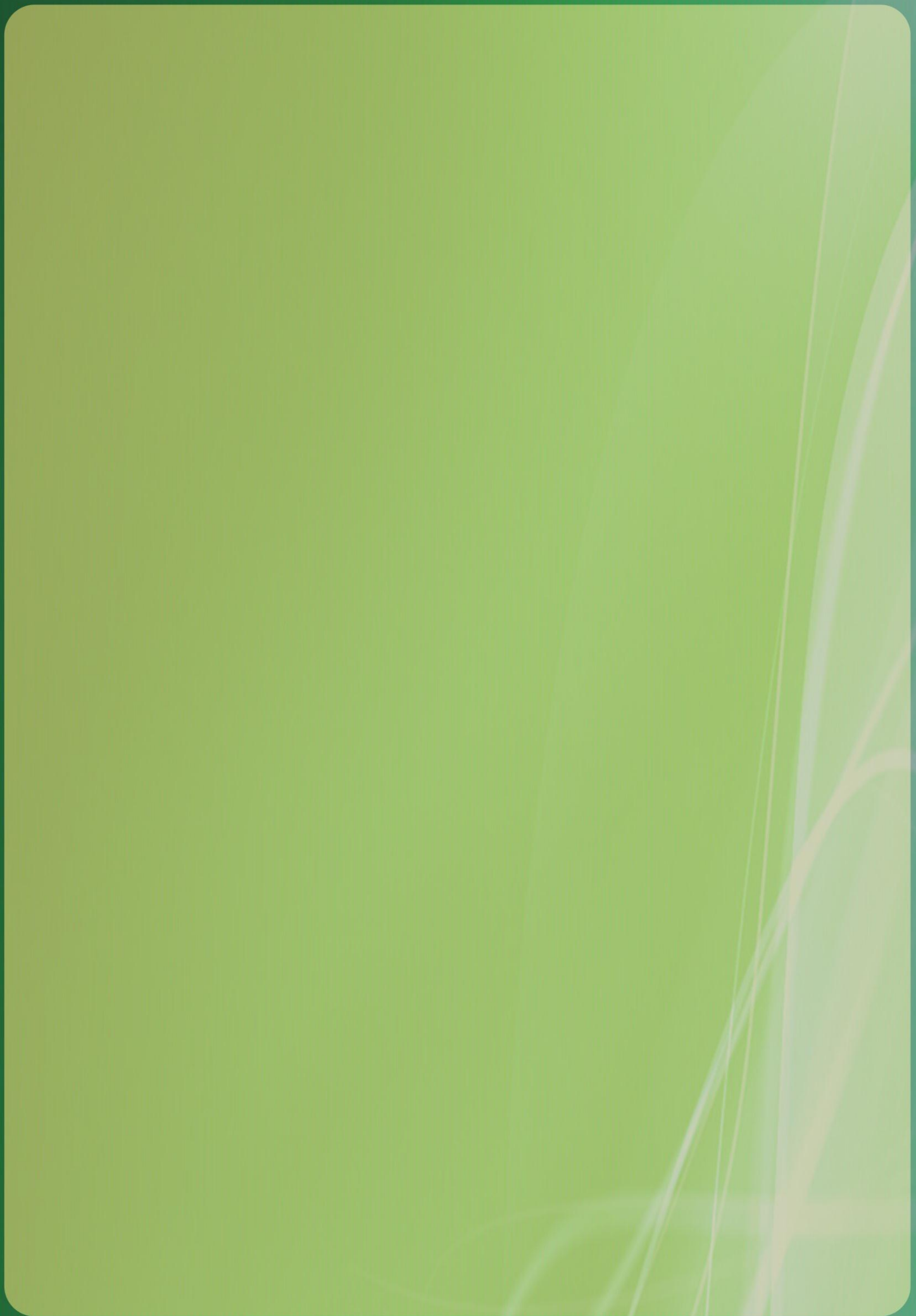


[illegible]



DIRECTOR'S REPORT

THE ROLE OF THE PROBATION SERVICE

Page 1

DELIVERING SERVICES

Page 3

- Offender Assessment, Supervision and Management
- Developments in 2012
- Community Service
- Community Return Initiative
- Young Persons Probation
- Community Initiatives
- Restorative Justice
- Victims
- Partnership Working

Page 3

Page 4

Page 8

Page 9

Page 10

Page 11

Page 12

Page 12

Page 14

PERFORMANCE AGAINST BUSINESS PLAN

Page 16

CORPORATE AFFAIRS

Page 19

- Organisational Structure
- Human Resources
- Finance
- Procurement
- Customer Service
- Staff Training
- Research
- Health & Safety
- Estate and Facilities
- Information
- Information Communications Technology
- Management Information

Page 19

Page 19

Page 20

Page 21

Page 21

Page 21

Page 23

Page 26

Page 26

Page 26

Page 27

Page 27

APPENDICES

Page 28

- Glossary of Terms
- Organisational Chart
- Financial
- Statistics 2012
- Community Based Organisations

Page 29

Page 31

Page 32

Page 34

Page 47

OUR VISION: Reduce re-offending to create safer communities.

The background of the slide features a faded, blue-tinted image of a construction site. In the foreground, a large paintbrush with a red and yellow handle and a wide, flat head is positioned diagonally. In the background, two workers in high-visibility vests are visible near a construction vehicle. The overall aesthetic is professional and industrial.

OUR MISSION: Reduce re-offending and contribute to a safer Ireland through the supervision and reintegration of offenders.

DIRECTOR'S REPORT



Vivian Geiran, Director

I am very pleased to present the Probation Service Annual Report for 2012 to Alan Shatter TD, Minister for Justice and Equality. This report sets out the work and the performance of the Service during 2012 against our key objectives.

The aim of the Probation Service is to help offenders avoid re-offending, thereby contributing to the Department of Justice and Equality's goal of a safer and fairer Ireland. On any day, Probation Service staff are working with (supervising and risk-assessing) over 8,000 offenders in the community.

In November 2012 the Service, working closely with the Central Statistics Office, published a major recidivism study based on data from 2007. The results of this study, which tracked 3,576 offenders over four years, clearly show that Probation works. Almost 63% of those who had been on Probation Service supervision in 2007 had no conviction for a further offence in the follow-up period. This compares very well with similar research from other jurisdictions. Sound outcome data is an essential part of measuring how well we are doing and in building organisational capability. I am committed to replicating this baseline study and working with our staff and other stakeholders to achieve even better outcomes based on excellent, evidence-led professional practice.

Interagency co-operation, particularly with our Justice partners, is at the heart of all our work. Under the Programme for Government, the Service is committed to 'ensure better co-ordination between the IPS and the Probation Service to create an integrated offender management programme.' During 2012, we worked more closely than ever with our colleagues in the IPS, to drive forward the new Community Return initiative. This sees suitable prisoners (over 300 in 2012) released early, under

Probation supervision programmes, and includes doing community service in their local communities. The Community Return programme has been a really positive development, and as well as allowing prisoners to swap community service time for prison time, has significantly helped these prisoners to successfully resettlement in their communities.

We have an ongoing commitment to partnership working with other organisations in Ireland and also in Europe. We have reinforced these partnership arrangements in practical ways over the course of the year, particularly with An Garda Síochána, the Courts, the Irish Prison Service, the Irish Youth Justice Service, the Parole Board, and the Health Service Executive amongst others, as well as with the Probation Board for Northern Ireland and CEP (the European probation organisation). We also worked closely with the various Justice-funded Community Based Organisations and others in the community and voluntary sector, to facilitate offender reintegration. On the 23rd of November 2012, the Service was honoured to welcome Ministers Alan Shatter TD and David Ford MLA, who addressed the third annual Public Protection Advisory Group (PPAG) seminar, hosted in our Haymarket Office. The PPAG is jointly chaired by the Director of the Probation Board for Northern Ireland and the Director of the Probation Service. The 2012 seminar theme was 'Partnership Working for Public Protection' and was another successful example of cross-border sharing of effective practice in interagency co-operation.

I look forward to continuing to deliver on our strategic goals of reducing reoffending and victimisation, promoting supervised community sanctions, providing alternatives to custody, further strengthening our interagency and partnership working, and enhancing our organisational capability to do this.

Vivian Geiran
Director

THE ROLE OF THE PROBATION SERVICE

The Probation Service is an agency of the Department of Justice and Equality committed to working to achieve the high level objectives and policy goals of the Department in working for safer communities. The Service works closely with the Courts Service, the Irish Prison Service (IPS), An Garda Síochána, the Irish Youth Justice Service (IYJS), the Parole Board and many organisations in the community. Our role is to contribute to public safety by the management of community sanctions and measures, the effective assessment and management of offenders and by facilitating the re-integration of ex-offenders.

We are the lead agency in the assessment and management of offenders in our community and we play an important role in helping to reduce the level of crime by challenging offender behaviour and working with offenders to change their behaviour and make good the harm done by offending. Our goal is to provide quality assessment and robust management of offenders using the best evidence based probation practice and meeting the highest standards of efficiency and accountability.

The Probation Service provides probation supervision, community service, community return, offending behaviour programmes and specialist support services, to both adult and young offenders. We also work in prisons and places of detention to rehabilitate offenders and facilitate re-integration.

STATUTORY FUNCTION

The Probation of Offenders Act (1907) provides for statutory supervision of offenders in the community and is the foundation for probation work in Ireland. We become involved in the criminal justice process between the trial and sanction/sentencing phases, often in cases where a court requires a pre-sanction assessment to assist in deciding on an appropriate sanction. In some cases, the court may be considering placing an offender on probation supervision or community service.

Other relevant legislation is listed below:

- Criminal Justice (Community Service) (Amendment) Act 2011 [No 24]
- Criminal Justice (Public Order) Act 2011 [No.5] (Begging)
- Criminal Justice (Psychoactive Substances) Act 2010 [No 22]
- Fines Act 2010
- Criminal Justice Act 2007 [No. 29] Part 3 Sentencing.
- Criminal Justice Act 2006 [No. 26] Part 7 *Organised Crime*, Part 8 *Misuse of Drugs* and Part 10 *Sentencing*
- Criminal Justice (Temporary Release of Prisoners) Act 2003
- Children Act 2001(as amended)
- Sex Offenders Act 2001
- Freedom of Information Act 1997 and Freedom of Information (Amendment) Act 2003
- Data Protection Act 1988 and Data Protection (Amendment) Act 2003
- Transfer of Sentenced Persons Act 1995 & 1997
- Criminal Justice Act 1993
- Criminal Justice (Community Service) Act 1983 (as amended)
- Misuse of Drugs Act 1977 (as amended)
- Criminal Justice Act 1960 (as amended)
- Criminal Justice (Administration) Act 1914
- Probation of Offenders Act 1907

In addition to the Constitution and relevant legislation our practice is guided by

- The United Nations Rules on Supervised Community Sanctions
- The Council of Europe: European Rules on Community Sanctions and Measures
- The United Nations Rules on the Supervision of Young Offenders
- The Code of Ethics of the Irish Association of Social Workers and International Federation of Social Workers
- Recommendation CM/Rec (2010) 1 of the Committee of Ministers to member states on the Council of Europe Probation Rules
- Framework Decision 2008/947/JHA on the mutual recognition of probation measures



Delivering Services

The work of the Probation Service broadly falls into two categories, offender assessment and offender supervision and management. Probation Officers provide offender assessment reports to court and to the Department of Justice and Equality, the IPS, the Parole Board and other appropriate bodies as required. The Service also supervises and manages offenders in the community on behalf of the Courts and the Department of Justice and Equality.

The principal areas in which the Probation Service delivers services are:

1. Offender Supervision and Management;
2. Community Service and Community Return;
3. Young Persons Probation (YPP);
4. Community Partner Initiatives, (Community Based Organisations in receipt of funding).

Offender Assessment, Supervision and Management

The Probation Service provides services to both adult and young offenders, in the community, in prison and in detention schools. Offender assessment is fundamental to the work of the Service. Probation Officers deliver an offender assessment service to Court to assist the court in sentencing decisions, particularly, but not always, where probation supervision or community service is being considered. In relation to children before the Children's Court we provide appropriate guidance and information relating to the range of community sanctions, under the Children Act, 2001, (as amended).

As part of our assessment, depending on the relevant aspects of an individual case including the type of offence and offender circumstances, Probation Officers now carry out one or more of a range of structured risk assessments on each offender. All of these instruments, added to Officers' general assessment skills and professional judgment, help them make well informed assessments, which in turn inform our case management plans and interventions with individual offenders.

There are two main types of offender assessment report:

- **Pre – Sanction Report (PSR):** Also known as 'probation reports', they assess suitability for a supervised community sanction and issues relevant to reducing offending.
- **Community Service Report (CSR):** These reports are to specifically assess the suitability of an offender to undertake unpaid work in the community instead of going to prison and also confirm the availability of a work placement.

Developments in 2012

During the year the Service dealt with 15,080 offenders in the community.

AGE / GENDER BREAKDOWN OF NEW REFERRALS				
Age Category	Gender			% Female
	Female	Male	Total	
12-17	67	643	710	9.4%
18-24	419	2965	3384	12.4%
25-34	460	2354	2815	16.4%
35-44	223	1049	1272	17.5%
45-54	64	374	438	14.6%
>54	31	140	171	18.1%
Total	1264	7525	8790	14.4%

14.4% of all new referrals were female.

The Probation Service prioritises work with offenders who are at higher risk of re-offending. During 2012 the Service allocated resources to maximise its efficiency and effectiveness prioritising supervision of higher risk offenders over those at lower risk. This included the management of lower risk offenders using the Low Intensity Supervision model in which the level of engagement with the Service reflects the risk of re-offending. 9% of offenders on supervision were managed at this level.

- Same Day Probation Service Assessment:** The same day Probation Service Assessment initiative was piloted in the District Court, Criminal Courts of Justice, Dublin between March and December 2012. The pilot was introduced to contribute to the delivery of 'swifter justice' and was delivered through our Court Liaison Team; specifically assigned Probation Officers based in the Criminal Courts of Justice provide assessments for court without requiring the traditional adjournment. A professional practice model for the provision of the *Same Day Probation Service Assessments* has been successfully developed which incorporates a comprehensive template for assessment, a report template and proposals for recommendation to court. The practice model has been revised for adoption by Probation staff in a number of court settings as well as in prisons, where they assist with the more efficient provision of assessment reports on offenders in custody.
- Programme Delivery Unit:** During 2012, the Service worked in partnership with the Bridge Project creating a Programme Delivery Unit to assist with the development, piloting and evaluation of approved offending behaviour programmes. We successfully piloted Choice and Challenge, a Cognitive Behavioural Therapy based offending behaviour group programme which is now being finalised for national implementation. In addition, work commenced on provision of a one-to-one Choice and Challenge Programme which can be used by Probation Officers to support effective supervision practice and which will be piloted in 2013.

- **Case Management Plans:** Our Case Management Plans for addressing offending related factors identified on assessment and within Court Order conditions were reviewed during the year. The new case management plan developed allows for increased efficiency and effectiveness in offender supervision in all community supervision regions.
- **Sex Offender Risk Assessment and Management model:** The Sex Offender Risk Assessment and Management (SORAM) model is a structured system for sharing information on those offenders subject to management on a multi-agency basis. The existing model was further developed by the Probation Service and An Garda Síochána for the joint assessment and management of the risk posed within the community by such offenders.



Pictured: Det Supt John McCann, Domestic Violence and Sexual Offenders Investigation Unit; Brian Dack, Assistant Director; Paul Harrison, Head of Policy and Strategy, HSE.

The SORAM process was designed to be operated at both a National level (National SORAM) and Local level (Local SORAM). The HSE Children and Families Service became involved in 2012 as the third statutory partner. The Probation Service has continued in 2012 to train its staff in the application of sex offender risk assessment instruments in order to enhance public safety and the prevention of further offending. The SORAM Model has been rolled out to a further 11 Garda districts bringing the total to 16 districts. This will be further extended in 2013.

- **Structured Risk of Serious Harm Assessment:** Following on from the report of the working group established to review a range of risk assessments focussing on harm and dangerousness, for use by the Service, a structured risk of serious harm assessment framework was devised. This framework was implemented across the Service in 2012 to guide and inform defensible decision making in our work with offenders.

209 offenders with a history of sexual offending were managed in the community by the Probation Service in 2012

There were 8,790 referrals from Court in 2012

Case Study



Michael, 40 years of age, was sentenced to 4 years imprisonment in 2010 for the possession of a large quantity of drugs for supply. A married man with three children, Michael had previous involvement with the Criminal Justice System and convictions as a young man. Working in the catering industry he had lost his job and candidly admits to getting into crime again to earn money.

He settled into prison quickly and was viewed as a quiet individual who was granted the privilege of working with the painting party within the prison. Within two years he was transferred to an Open Prison to continue his sentence. While there he was considered for the Community Return scheme, an initiative where prisoners after they complete half their sentence are given the opportunity to serve the remainder in the community while engaged in supervised community work.

Michael was risk assessed by the Probation Officer as suitable for the scheme and the IPS agreed to reviewable release for him.

After an induction programme at a probation community office Michael attended a project under the management of a Probation Service Community Service Supervisor. He was involved in the painting and decorating of accommodation for homeless people. Over the course of his Community Service Michael did not miss a day. His supervisor reported on his positive commitment and enthusiasm and excellent work.

As part of the service the Probation Service provides Michael availed of assistance from a Training and Employment Officer to access a pathway into employment. He was delighted with this opportunity. Indeed, in general, Michael saw his Community Return experience as a great help to him in reintegrating back into the community and assisting him start a new and more positive chapter in his life.





Community Service

The Probation Service manages Community Service on behalf of the Department of Justice and Equality. Community Service is a sanction used by the courts, in lieu of a prison sentence, whereby, convicted offenders over 16 years of age may be given the opportunity by the Court to perform between 40 and 240 hours of unpaid work for the community. We continued to prioritise and focus on Community Service in 2012.

Community Service participants completed a wide variety of work activities during 2012 in order to complete their Community Service Order and pay back to society. Many of these activities offered opportunities to learn new skills. Where persons on a Community Service Order expressed an interest in further training or employment opportunities for referral to a Training and Employment Officer (TEO) were provided.

Table below details some of the work carried out by Community Service during the year.

Community Service tasks included:

<ul style="list-style-type: none"> • Graffiti removal in co-operation with Local Authorities. 	<ul style="list-style-type: none"> • Painting/decorating/cleaning/grounds maintenance in schools, churches and hospitals.
<ul style="list-style-type: none"> • Painting/decorating/cleaning/grounds maintenance with the Voluntary Sector. 	<ul style="list-style-type: none"> • Environmental cleaning and landscaping with the Tidy Towns.
<ul style="list-style-type: none"> • Landscaping and Grounds Maintenance in estates and parklands in association with County Councils. Cemetery Maintenance, grass cutting , strimming, weeding and litter collection 	<ul style="list-style-type: none"> • Clean up of the shore front and beaches.
<ul style="list-style-type: none"> • Creation of a school garden with raised beds, new pathways, trees etc. for education purposes for children 	<ul style="list-style-type: none"> • Meals on Wheels and food preparation in association with charitable organisations.
<ul style="list-style-type: none"> • Repair/recycling of medical equipment, such as crutches, walking aids in association with the HSE. 	<ul style="list-style-type: none"> • Art/craft work for example, repairing church pews, producing mosaic pieces for local organisations.

As part of a broader review of Probation Officer duties undertaken in 2012 all aspects of the operation of Community Service was examined. Following wide-ranging consultation and discussion with all stakeholders the key areas of assessment; induction; managing the order; seeking worksites; enforcement of orders and community return practice were reviewed and identified improvements have been incorporated into Community Service practice, policies and procedures.

Community Return Initiative

2012 also saw the Service deliver on our strategic objective to maximise cross agency co-operation, when, in close consultation with the Department of Justice and Equality and the IPS, the Community Return initiative was rolled out.

The Community Return scheme is an example of interagency working to deliver on one of the key objectives of the Programme for Government 2011-2016 to *“Ensure better co-ordination between the IPS and the Probation Service to create an integrated offender management programme”*.

Community Return is a joint Probation and Prison Service initiative whereby carefully selected prisoners are granted reviewable temporary release conditional on them performing unpaid supervised community work. The participants are serving sentences of between 1 and 8 years and must have served at least half of their sentence.

A pilot programme commenced in October 2011 and a total of 365 offenders were released on to the Scheme between that time and the end of 2012. A further 85 persons were assessed but did not progress on to the scheme. The reasons for non-progression included lack of permanent accommodation, medical issues which made them unsuitable for the work and / or misbehaviour in custody in the time between initial consideration and the final decision on temporary release.

By year end, a total of 221 persons had completed their allocated work with approximately 10% (37 participants) being returned to custody for non-compliance. The scheme operates on a "2 Strike" rule with offenders judged to be in breach if they fail to attend or are late for their work on two separate occasions. Persons in breach are returned to custody and complete the entire balance of their sentence.

The experience of all concerned has been very positive and many Community Return participants have been commended for their work ethic, punctuality and commitment. Initial feedback from the participants has also been positive with many commenting on the supports and structure it gives them on their release and how it has assisted in their transition back into the community.



Maginn Park, Buncrana, Co. Donegal - Before and After

The Community Return scheme had a 90% compliance rate in 2012

Young Persons' Probation

In 2012 the Service received 860 new referrals from Court on young offenders

Young Persons' Probation (YPP) continued to work within the Children Courts nationally, providing advice and assessments to Courts, and the supervision of young people subject to community sanction orders under the Children Act 2001 (as amended).

YPP worked closely with the IYJS and the Child Detention Services in the development of inreach and throughcare services to improve the continuum of care for children subject to detention. Comprehensive community supervision plans enabled young offenders return to their communities at the earliest appropriate time and allowed for the continued reduction in the number of young people in detention.

***There were 888
(probation)
supervision orders
involving young
people made by the
Courts in 2012***

We recognise an interagency approach is a prerequisite in working with young people and their families at both assessment and supervision stage. YPP continued to play its part in the development of the Children Services Committee's strategy of the Office of the Minister for Children and Youth Affairs.

Throughout 2012 we continued our work with the IYJS in the drafting of amendments to the Children Act 2001 (as amended). Revised protocols were also developed in the areas of: Preparation of Pre-Sentence reports for Young Persons appearing before the Court; Assessment and Management of Young Persons subject to Community Service Orders; and Bed Management procedures. We continue to build on our partnerships with our colleagues in the IYJS, the HSE, An Garda Síochána and the Children Detention Schools ensuring the Courts were provided with the best available information to inform their decisions, continually ensuring detention as a last resort.

YPP Services to young people and their families included:

• Individual young person supervision and advocacy by YPP Officers.	• Parent –to-parent mentoring support.
• Parent support by YPP Officers.	• Addiction interventions.
• Offending behaviour group work.	• Social and vocational skills development.
• Sex offender treatment group work.	• Adventure sports and activities.
• Restorative Justice Interventions incorporating victims and victim perspectives.	• Counselling.
• Volunteer Mentoring to develop pro-social thinking and behaviour.	• Outreach street work.
	• Cognitive based offender behaviour programmes.

Community Partner Initiatives

(Community Based Organisations in receipt of Service funding)

The Department of Justice and Equality and the IYJS, through the Probation Service, provide funding to 46 adult and 16 young persons' Community Based Organisations (CBOs) whose objectives are strategically aligned to the objectives of the Probation Service and support the Probation Service in enhancing public safety and breaking the cycle of crime.

***There were 62
Community Based
Organisations in
receipt of funding
in 2012***

The CBOs funded by the Probation Service provide a range of services to offenders to support the Probation Service in addressing offender behaviour and facilitating the reintegration of offenders into their community. These services include training and education, offender management programmes, residential accommodation and drug/alcohol abuse treatment programmes.

The YPP CBOs provide a range of services which address the specific needs of young persons who have come into conflict with the law such as, mentoring and strengthening family support programmes.

An online reporting application which is linked to the Probation Service Case Tracking System is now fully operational. The application enables each CBO to report monthly on each client's progress and will allow for more comprehensive management information on outcomes. The application also facilitates the business planning process and the return of quarterly financial management accounts.

It is a requirement of Probation Service funding that Boards of Management practice the principles of good governance in the management of their organisation. The Service arranged for *Good Governance Training*, during 2012 specifically tailored to the needs of the CBOs funded by the Service.



Good Governance Training delivered by the Service in 2012

Restorative Justice

The Report from the National Commission on Restorative Justice highlighted the benefits of a restorative justice approach to criminal behaviour. The implementation of Restorative Justice on a nationwide basis would make a positive contribution to the lives of all citizens, victims, offenders and their families. Restorative Justice has the potential to break the destructive pattern of behaviour of those who offend by challenging them to confront the full extent of the harm and the emotional and physical impact, they have caused to their victims.

Our YPP team in partnership with the Le Chéile Mentoring Project continued to manage the Limerick Restorative Justice Initiative. Funding continues to be provided by the IYJS and Limerick Regeneration Project.



The Department of Justice and Equality, through the Probation Service, provides funding for three Restorative Justice initiatives based in Dublin, Tipperary and Limerick operated through community based organisations.

Extending the range of Restorative Justice Schemes is a strategic priority for the Probation Service. This involved the expansion within existing budgets of two restorative projects - the Restorative Justice Service based in Tallaght was extended to the Criminal Courts of Justice, the Children Court and to the District Courts in South County Dublin, while the Nenagh Community Reparation Project extended to the District Courts in North Tipperary.

Victims

Probation Service staff work to ensure that all interventions with offenders are sensitive to the concerns of victims and are focused on preventing further offending. The Service also engages in direct work with victims of crime, in instances where the courts have requested the preparation of Victim Impact Assessment Reports.

The Probation Service has a Victim Services Co-ordinator who acts as a single point of contact for anyone affected by crime who wishes to make contact with the Service. The level and type of contact depends on the need of the particular person.

55 Victim Impact Reports were completed by Probation Officers during 2012

Probation Service involvement with the National Office for the Prevention of Domestic, Sexual and Gender-based Violence, (COSC)

Throughout 2012 the Probation Service continued to support the implementation of the National Strategy on Domestic, Sexual and Gender-based Violence 2010-2014. The Service is represented on the National steering committee for Domestic and Sexual Violence and on the Regional Advisory Committees on Domestic Violence which promote inter-agency co-operation.

In 2012, the Service continued to use the Spousal Assault Risk Assessment (SARA) for the assessment of perpetrators of domestic violence. We also trained additional Probation Officers in the use of the SARA instrument.

We continued our involvement in the North Eastern Domestic Violence Programme '*Men Overcoming Domestic Violence*' in Louth, which is run in association with womens' services, and the Health Service Executive, (HSE).

The Probation Service, Prison Service, FAS and Business in the Community continue to work together to ensure sex offenders have access to relevant training and employment opportunities as part of risk management arrangements.

The Probation Service continues to work closely with the HSE regarding developments linked to the Ferns 5 Report recommendation for community based regionalised adult and adolescent perpetrators programmes.

Partnership working

Critical to the work of the Probation Service are our Strategic Alliances with stakeholders particularly in the Criminal Justice Area. During 2012 the Service worked collaboratively with the Courts Service, the IPS, An Garda Síochána, the Parole Board and the IYJS to support the Department of Justice and Equality's goal of working for a safer and fairer Ireland.

The Service was represented by the Director on the Working Group on Efficiency Measures in the Criminal Justice System (Circuit and District Courts) and the Penal Policy Review Group. The group on efficiency measures identified and reported on how efficiencies and cost reduction measures could be achieved in the operations of the Circuit and District Court, with particular emphasis on how the agencies in the sector interact with the Courts and with each other. The Penal Policy Review Group has been established by the Minister for Justice and Equality to carry out a strategic review of penal policy taking into account the rights of those convicted of crimes, the perspective of those who are victims of crime, and the interests of society in general.

The Service also worked very closely with stakeholders in the Community, other Government Departments, Agencies and Authorities. We recognise the vital role of the Community and Voluntary Sector in working in partnership with the Service, particularly through the funded projects to support our staff in their day to day work.

Public Protection Advisory Group Seminar

In November 2012 the Service hosted the 3rd annual Public Protection Advisory Group (PPAG) Seminar, which was attended by delegates from Justice Agencies (Departmental, Police, Probation and Prisons) throughout the island of Ireland.

The PPAG was established in 2006 to specifically address how increased cross-border co-operation could be taken forward and to implement the probation elements of the agreed work programme coming from the Justice Ministers, North and South. The PPAG is jointly chaired by the Director of the Probation Board for Northern Ireland and the Director of the Probation Service.



From left to right: Vivian Geiran, Director, Probation Service; Minister Alan Shatter TD, Minister for Justice, Equality & Defence; Minister David Ford MLA, (Minister of Justice Northern Ireland); Brian McCaughey, Director, Probation Board for Northern Ireland

Ministers Shatter and Ford, as well as both Service Directors, addressed the November seminar. Guest speakers from various agencies presented on topics such as: 'Co-ordinated Strategic Responses to Dealing with Crime'; 'Communication and Joint Working'; 'Reducing Offending in Partnership; and the 'Community Return Project'.

The ninth volume of the Irish Probation Journal was also launched on the day.

Co-operation in Europe

There has been continued involvement with European Probation in CEP (Conference Permanente Europeenne de la Probation) during 2012 and we had the honour of hosting the 75th CEP Board meeting in April 2012. CEP is the European Organisation for Probation which aims to promote the social inclusion of offenders through community sanctions and measures such as probation, community service, mediation and conciliation. CEP is committed to enhance the profile of probation and to improve professionalism in this field, on a national and a European level.



Members of the CEP at the 75th CEP Board meeting hosted by the Probation Service in Dublin in April 2012

As part of our European Projects the Service hosted a transnational 3 day visit on the implementation of the Framework Decision 2008/947/JHA(FD) on the mutual recognition of probation measures across the EU. This event took place in the Services Head Office in Haymarket in July 2012. The delegates from Romania and Italy also visited the Tivoli Training Centre, Dun Laoghaire, Co. Dublin for presentations on the work of the Tivoli Centre and the Probation Service.



Tivoli Training Centre, Dun Laoghaire, Co. Dublin

On 6th December 2012 the Probation Service hosted a fact finding visit on the work of the Service by representatives of the Georgian Ministry of Justice, Probation Service and Prison Service.

The visitors were part of a Government delegation from Georgia in Dublin for a meeting of the Organisation for Security and Co-Operation in Europe (OSCE) chaired by the Minister for Foreign Affairs at the RDS.



Delegates from the Georgian Penitentiary and Probation Training Centre visiting the Probation Service in December 2012

Performance set against Business Plan

Throughout the year the Service measured its performance against its strategic goals outlined in the Service Strategy Statement 2011 – 2014 and against the programme of work mapped out in the Service workplans.

The strategic objectives and work programmes are framed within the context of economic constraint and public service reform. The Government's Programme for National Recovery, 2011–2016 has an agenda of change and reform that aims to lay the basis for economic renewal and recovery. The Public Service is required to generate sustainable savings and implement change to ensure that front line services continue to be delivered and improved. The Probation Service remains committed to continuing its modernisation programme and to the delivery of a range of effective sanctions for the Courts and the community at large.

The three principal strategic goals of the Service are: (1) Reduce reoffending and prevent further victimisation through the delivery of community sanctions and measures; (2) Address crime and social inclusion through strengthened strategic alliances; (3) Enhance our organisational capability in delivering excellence and innovation.

The following tables set out the key targets achieved throughout the year.

Goal 1: Reduction of re-offending and prevent further victimisation through the promotion and delivery of community sanctions and measures.	
Expansion of the range of innovative and evidence led interventions delivered by the Service nationally.	<ul style="list-style-type: none"> • We extended the use of risk based approaches to the management of offenders, e.g. the SORAM and LSI-R. • We contributed to the development of multi-agency responses to the management of specific offender groups. • The Service delivered 1,016 Same Day Assessment Community Service reports in 2012. • The Probation Service Group Programme strategy was drafted with group programmes piloted in 4 areas.
Development of initiatives to break the cycle of offending, provide alternatives to custody and enable re-integration of offenders.	<ul style="list-style-type: none"> • The Community Return pilot was reviewed at end of March 2012 and subsequently extended. • A Community Service Review was undertaken with recommendations being implemented. • Site availability was extended in the North East, Cork and Dublin. • The Service continued to work with Community Based Organisations to provide flexible and effective programmes aligned to the changing needs of the Service. • A Strategy document on Probation work with women was drafted with dedicated Service staff working with women being piloted in 2 areas.
Contribution to the development of Justice policy initiatives through the promotion of the significant role of community sanctions in the reduction of re-offending and as an effective sentencing alternative to custody.	<ul style="list-style-type: none"> • A Recidivism Study was completed in partnership with the Central Statistics Office. The report was published in November 2012. • The results of an Adult Offender Drug and Alcohol Misuse survey were published in May 2012. • A 2nd Foreign National study was completed. • The Service commenced participation in European treatment and transition management of high risk offenders' project.

Goal 2: Through strengthened strategic alliances and partnerships address crime and social inclusion.

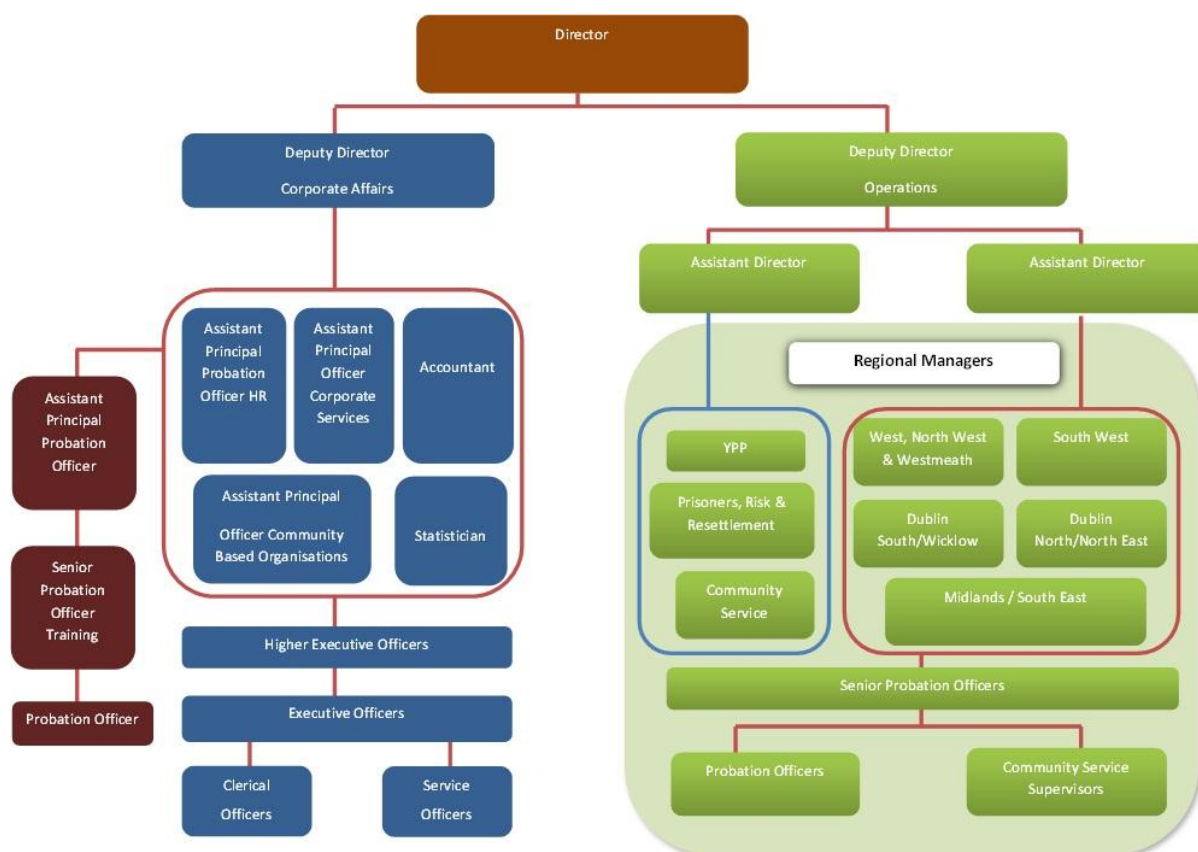
Contribution to a criminal justice wide co-ordinated and integrated system of offender management.	<ul style="list-style-type: none"> • Probation Service signed up to Inter-agency agreement with local authorities, the Department of Social Protection and the IPS, to enhance prisoner integration. • Probation Service represented at Homeless network meetings. • Sharing of information protocol agreed with INIS and implemented with effect from July 2012. • The Service continued to work closely with An Garda Síochána on a joint model of sex offender management. (SORAM). HSE participation in 5 original pilot areas.
Work with local, national and European partners to develop and deliver effective services to reduce reoffending.	<ul style="list-style-type: none"> • Service participation on Justice working group on efficiency measures in the criminal justice system. • North South Public Advisory Group (PPAG) held in Probation Service Head Office Haymarket in November 2012. • Active participation in CEP. • Partnership arrangements with 1) Germany – in relation to reintegration of high risk offenders. 2) Portugal regarding juvenile recidivism and 3) the Netherlands in exploring the feasibility of circles of support and accountability. • Hosted 3 day transnational meeting in July 2012 in connection with the effective implementation of Framework Decision 2008/947/JHA, (mutual recognition of probation sanctions)
Worked to improve outcomes for victims and offenders through developing enhanced strategic alliances with the wider statutory, voluntary and community sector.	<ul style="list-style-type: none"> • Tallaght Restorative Justice Services extended to include the Criminal Courts of Justice and the Dublin Children's Court. • Nenagh Reparation Project expanded to incorporate Courts in North Tipperary. • Funding secured to provide restorative interventions for YPP referrals in Limerick. • Training and support provided to community agencies and schools in implementing restorative practices.

Goal 3: Enhanced organisational capability in delivering excellence and innovation.

Delivered services to highest standards and levels of professionalism	<ul style="list-style-type: none"> • The service reviewed standards for Probation Work, e.g. for Community Service Supervision, Probation Orders and Supervision of sex offenders under the Sex Offender Act 2001. • The Service undertook a 2nd Foreign National Survey to inform practice. • A report on Customer Service Survey issued. • A staff learning needs analysis and training on offender assessment was undertaken. LSI_R training undertaken.
Maximise the benefits of ICT, research and data management	<ul style="list-style-type: none"> • A Draft data strategy was developed. • Established Web-based Probation Press newsletter to enhance internal communications and information exchange. • Systems put in place for the provision of monthly management reports. • The final phases of Community Based Organisations database went live during the year. • An Adult Offenders Drug and Alcohol Misuse report published. • The Website was continually reviewed. • A Recidivism report completed in conjunction with the Central Statistics Office and published in November 2012.
Effective management of resources achieving value for money.	<ul style="list-style-type: none"> • The Service undertook manpower planning to meet Service priorities, identifying areas for redeployment. • A Workload Management Framework Agreed and implemented. • National procurement contracts/framework agreements/Departmental contracts were utilised. • Streamlined systems to maximise economies in procurement of goods and services. • An Estate Review commenced to be completed in early 2013. • Health and Safety Training needs analysis managed through Service E-Learning site.

CORPORATE AFFAIRS

The Corporate Affairs directorate has a wide range of responsibilities including Human Resources, Information Technology, Finance, Estate and Facilities Management, Research, Learning and Development and Information and Statistics. The work of the directorate supports our delivery of a quality service. The Probation Service is committed to best corporate governance principles with well-defined and managed practices that takes account of stakeholders and ensures ethical standards are met.



Above: Probation Service Organisation Chart, December 2012. A larger version of the chart is available in the appendices.

Human Resources

The Public Service Agreement 2010-2014 requires sustainable savings to be generated and changes implemented to ensure that frontline services continue to be delivered and improved. The Probation Service is committed to maximising the use of all our resources in the delivery of our services.

In 2012, the Human Resources unit in the Probation Service continued to collaborate with the Department of Justice and Equality on workforce planning aimed towards meeting Service delivery needs and to provide staffing to facilitate new initiatives. The Service is cognisant of the pressures on public finances and has managed reductions in staffing through proactively managed redeployment and greater flexibility by all staff.

The Service engaged with the Department of Justice and Equality HR Division on various staffing matters and fully implemented the Civil Service Attendance Management Policy to reduce sick leave and absenteeism in the public sector. The Service continues to perform well in this area.

Approval was received to fill the vacant Director post with a competition being held in July 2012. Vivian Geiran was appointed Director of the Service in August 2012. Approval was subsequently received to fill the consequential Deputy Director post. This was advertised in December 2012 with the competition scheduled to take place in January 2013. Sanction was also received to recruit four Community Service Supervisors to augment the delivery of Community Service and the Community Return scheme. Interviews were held in December 2012 with a view to commencement in early 2013.

The Service in conjunction with the IPS successfully explored the shared use of staff on collaborative projects. As part of the Community Return scheme an Assistant Principal Officer from the IPS was co-located to the Probation Service Headquarters in Haymarket to assist in ensuring a joined-up approach in the management of offenders.

In 2012 the Service developed and implemented two additional key staffing policies to ensure best practice procedures are maintained: They are *Policy on Contact with Previous Service Users (PSHR01)* and *Policy for Case Review and Staff Support Procedures: Serious Further Offences Concerning Offenders on Supervision Cases*. The purpose of all these documents is to acknowledge in a clear and transparent way our responsibility to support and manage staff at all times in the discharge of their duties while at the same time maintaining a high levels of professional integrity and corporate responsibility.

The Probation Service actively promotes the Health and Wellbeing of all employees and of the importance of promoting a positive working environment for all. We have continued with awareness promotion and, during 2012, a new Slí Na Sláinte initiative to encourage walking, was introduced in conjunction with the Irish Heart Foundation. Health screening was also made available to all staff as part of a wider Department of Justice and Equality programme.



Finance

The Probation Service was allocated a budget of €40.171 million for 2012; actual expenditure was €37.589 million delivering savings of €2.582 million in the year. Pay accounted for approximately 60% of the Service's expenditure. The other most significant area of expenditure was Services to Offenders (Current) which accounted for 28% of the overall budget.

The primary function of the Finance Unit of the Probation Service is the financial management of resources available to the Probation Service. The Finance Unit has responsibility for the following areas;

- Financial management and planning
- Financial reporting and budgetary control within the Probation Service
- End of Year Reporting to Department of Justice and Equality
- Provision and management of financial management systems
- Procurement and Supplier contract management
- Employee allowances and expenses
- Financial Management of Probation Service funded community based organisations

Procurement

The Probation Service continues to monitor purchasing expenditure, review purchasing requirements and consolidate the purchasing of goods and services to ensure better value for money.

Savings in purchasing have been achieved by:

- Negotiating discounts from larger suppliers and availing of lower prices in a more competitive market.
- Reducing the amounts payable for goods and services by using centralised framework agreements and tender arrangements in place.
- Managing stocks of stationery and ICT consumables more efficiently by implementing centralised purchasing arrangements.

Customer Service

The Probation Service is committed to a quality customer focus in service delivery. Earlier in the year we published a Customer Service Report resulting from a survey in December 2011. Implementation of the recommendations arising from the survey is underway.

Quality service to all customers remained a priority during 2012. The Service has a Customer Service Officer who oversees customer service complaints. Details of the customer service policies are available on our website.

In 2012, there were 10,402 client interviews held in the Haymarket office in Smithfield which was an increase of 590 (6%) on 2011

10,402 client interviews were held in our Haymarket office in 2012

Staff Training

During 2012 the Research, Learning & Development Unit facilitated training courses, seminars and conferences aligned to the business and operations of the Probation Service ensuring staff are resourced and competent to meet business goals in a professional and efficient manner. A priority for training in 2012 was to establish and support the professional competence of relevant staff in the use of the various risk assessment instruments which are a standard of practice in the Probation Service. A list of training provided in 2012 is set out in the table on the next page.

TRAINING COURSES PROVIDED IN 2012

General Training and Specific Offender Interventions	Risk Assessment Training
Performance Management and Development System	PS/ROSH (Assessment of the Risk of Serious Harm)
Occupational training for Community Service Supervisors (CSS)	Spousal Assault Risk Assessment (SARA) - Domestic Violence cases
Domestic Violence Policy	Level of Service Inventory Revised (LSI-R) - generic cases
Working with Suicide and Self harm	Risk Matrix 2000 (RM 2000) - sex offender cases
Restorative Justice Conferencing Certified Training	Stable and Acute 2007 (SA2007) - sex offender cases
Restorative Justice Introduction	Youth Level of Service /Case management Inventory (YLS/CMI)
Working with Sex Offenders for CSS	
Working with Suicide and self-harm for CSS	

The Probation Service facilitated approximately 50 social work student practice placements during 2012. Many Probation Officers are also social work practice teachers within the Service. Placements are provided to students pursuing the programmes in University College Dublin, Trinity College Dublin, University College Cork and National University of Ireland, Galway. Practice placements are a core element in the professional training of social work students and are usually of 14 weeks duration.

In 2012, lectures were delivered by staff from the Training and Development Unit in both University College Dublin and Trinity College Dublin, as part of the professional Masters in Social Work programme.

Research

The Service maximised all opportunities to engage with research projects relevant to best and effective practice. The ongoing review and evaluation of Probation effectiveness is particularly critical at a time of scarce resources.

Research Studies published in 2012

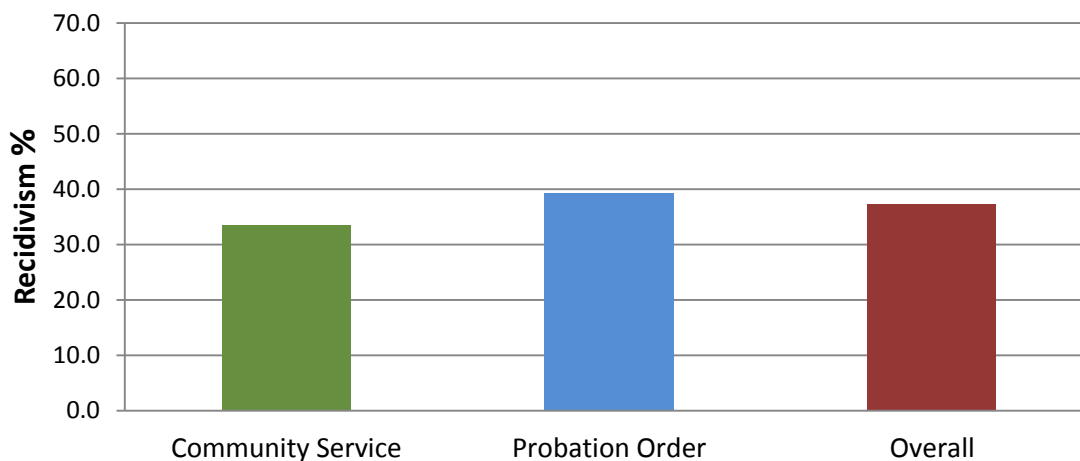
Probation Service Recidivism Study 2007-2011: In November 2012, Minister Alan Shatter, TD welcomed the publication of the Probation Service Recidivism Study 2007-2011. The study was completed by the Probation Service in partnership with the Central Statistics Office (CSO).



Speaking on its publication, Minister Shatter said

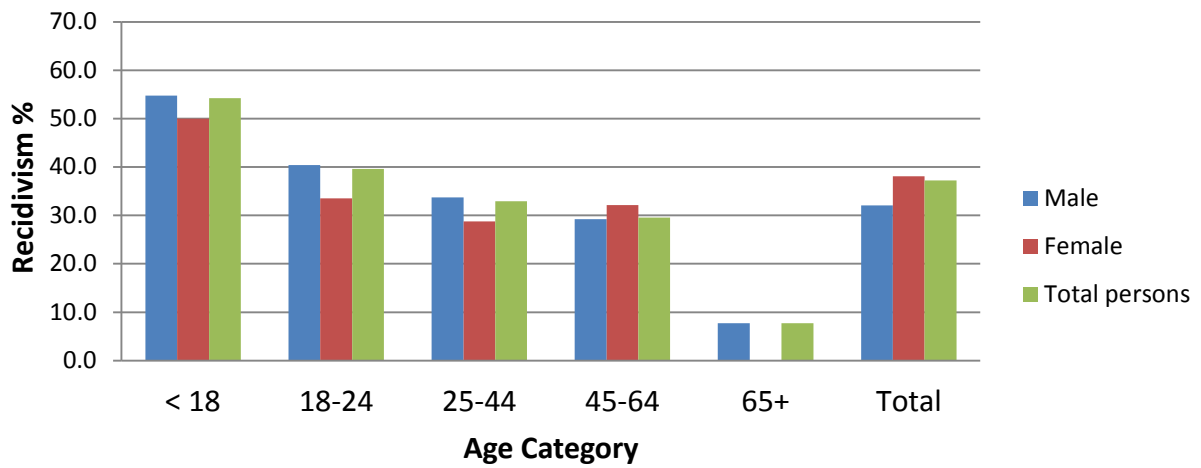
"This is the first time there has been such an assessment of the impact of non-custodial measures on rates of re-offending. The results are interesting with the study showing that almost 63% of offenders who were given an alternative sanction by the Courts in 2007 had not re-offended after two years".

Recidivism by Order

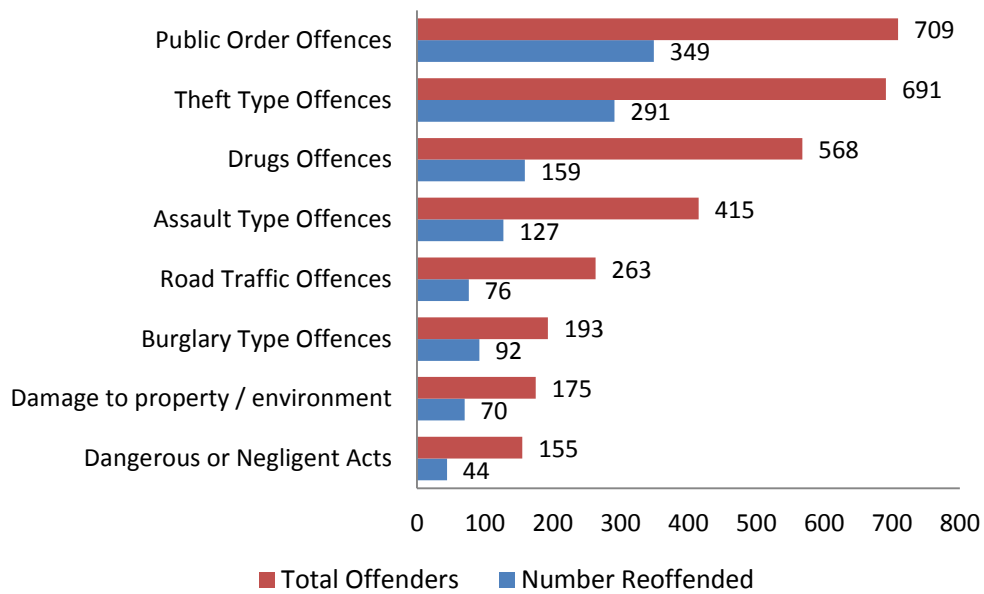


The study's findings show that the recidivism or re-offending rate was 37.2% for the cohort of offenders who were under supervision by the Probation Service in 2007. The report covered reoffending and reconviction up to 2011. Males made up 86% of the total population and had a higher recidivism rate than females. Recidivism rates were seen to decrease as the offender's age increased, and re-offending was twice as likely to occur in the first rather than the second twelve months of the two year supervision period.

Recidivism by Age / Gender



Original and Subsequent Reoffending

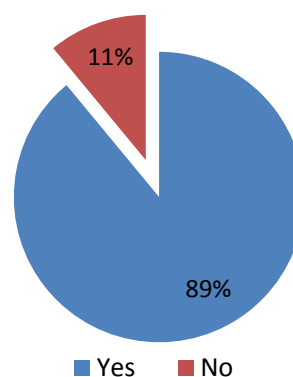


Service Drugs and Alcohol Survey 2011:

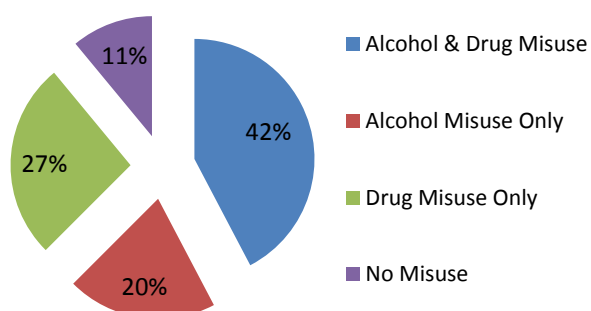
The Report of the Probation Service Drugs and Alcohol Survey completed in 2011 was published in May 2012. The Report's findings are based on the first large-scale, nationwide survey conducted by the Service in Ireland on drug and alcohol misuse among the adult offender population on probation supervision.

The number of adult offenders on the Probation Service caseload who had 'ever misused drugs and/or alcohol' was very high; at 89%. The data showed that drug misuse is substantially higher among the adult offender population on Probation supervision compared to the general population in Ireland. Current offending was linked to drug misuse for 74% of offenders on Probation supervision according to their Probation Officers.

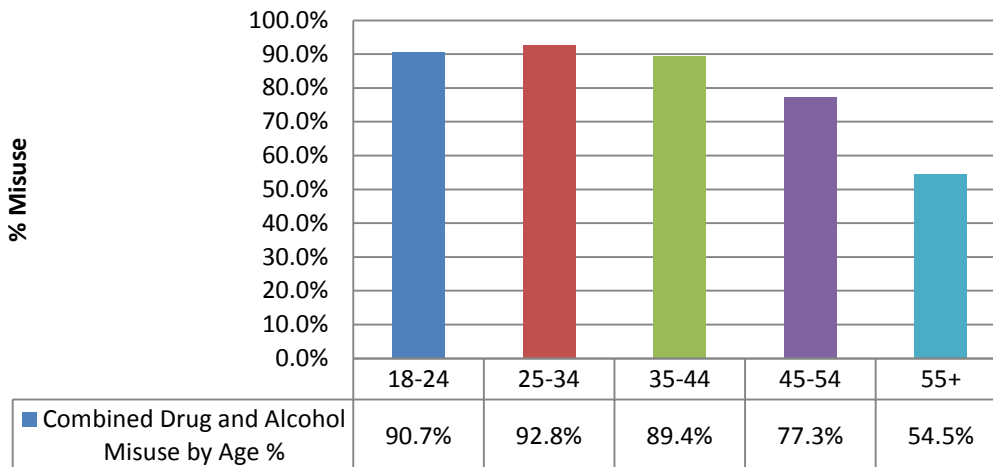
Overall Misuse (Adult Offenders)



Adult Offenders – Misuse Patterns



Misuse by Age



Drug or Alcohol Prevalence				
Drug	Current	%	Previous	%
Alcohol	1078	36.4%	1113	37.6%
Cannabis	645	21.8%	937	31.6%
Opiates	265	8.9%	766	25.9%
Stimulants	190	6.4%	1002	33.8%
Misused Prescribed Drugs	219	7.4%	568	19.2%
Miscellaneous ¹	55	1.9%	256	8.6%

¹ Miscellaneous includes steroids, hallucinogens, headshop products and other substances.

Health and Safety

Health and Safety continued to be a priority within the Service. The National Health and Safety Committee met regularly during the year and health and safety was placed on the agenda at all management, regional and team meetings.

The Service is a member of the State Claims Agency's Risk Management Network and attends Network meetings. In 2010 the Service asked the State Claims Agency, (SCA) to carry out an audit of the health and safety risks to staff when dealing with certain offenders. The SCA made twenty nine recommendations, one of which was that the Probation Service develop a formal procedure for the assessment of the health and safety risk an offender may pose to Probation Service staff.

The Service developed a formal health & safety risk assessment framework incorporating both the assessment and control measure elements, to be completed by Probation Officers at the offender assessment stage, and updated at appropriate intervals thereafter. Following a pilot in 2011 covering a range of operational areas and following extensive feedback and a full review of the pilot a revised format was developed and agreed. This new assessment framework was launched nationally in February 2012.

Estate and Facilities

During 2012 Estate and Facilities Unit continued to liaise with the Office of Public Works and Regional Managers on the management of Probation Service estate and facilities throughout all the offices. A comprehensive Probation Estate Review commenced in September 2012, and is to be finalised in the 2nd quarter of 2013.

Information

Information and communication requests were co-ordinated through Corporate Services. A dedicated FOI and Data Protection unit ensures prompt responses to requests for personal information and information on the work of the Service.

FOI Requests	27
Third Party Requests	3
FOI Appeals	2
TOTAL FOI REQUESTS	32
TOTAL DATA PROTECTION REQUESTS	20

Information Requests 2012	
Press Queries	21
Dáil Questions	60
Other	119
Total	200

Information Communications Technology

The IT Unit in the Probation Service provides and maintains a range of IT services which support the Operational and Strategic functions of the Service. In 2012 a number of key IT projects were finalised.

Delivering on the recommendations of the Value for Money Report, our community service operations were fully integrated into the Service's Case Tracking System. This development of the Case Tracking System has further enhanced the management of Community Service throughout the country and provides real time data in relation to work/site attendance and capacity. Accurate access to worksite availability and attendance information facilitates the timely management of Court requests regarding Community Service placements.

The online I.T. application for Community Based Organisations (CBOs) has been fully developed and rolled out. The web based application is linked to the Probation Service Case Tracking System. It enables each CBO to report monthly on a client's progress and will in time allow for management information on outcomes. The application also facilitates the business planning and funding application process and the return of quarterly management accounts.

On 1st October 2012 a fully electronic system for accessing the criminal records of offenders referred to the Service was launched. This ground breaking collaboration with our colleagues in An Garda Síochána has been a great success and has attracted the interest of other agencies seeking to replicate the system. In 2012, An Garda Síochána processed 8,226 criminal record requests on behalf of the Probation Service.

**8,226 criminal
record requests
were processed on
behalf of the
Probation Service
by An Garda
Síochána in 2012**

Management Information

The Probation Service recognises that quality data, statistics and analysis informs and supports the implementation of key policies and the delivery of frontline services. The production of high quality data informs our business needs and contributes to an integrated approach to information sharing between our partner organisations.

A key project during 2012 was the finalisation of the Research Study with the Central Statistics Office on Recidivism in Ireland, results which were published in November 2012. The ongoing secondment of a Statistician from the Central Statistics Office has assisted in the development of our management information systems.

Service systems were further developed throughout 2012 to facilitate 'live' statistical reporting when responding to information requests. Comprehensive management reports are generated monthly and the Service also produces common headline data reports with our counterparts in the Probation Board for Northern Ireland as part of the Public Protection Advisory Group's *Partnership Working for Public Protection* initiative. The development of the *Workload Tracking System* facilitates 'real time' workload information and allows the Service to manage its resources in a responsive and pro-active manner.

The Service recognises that continuous improvement in the quality of data and information reports is crucial in this era in which performance is measured and where efficiencies must be provided while maintaining and improving service quality.

Appendices

Glossary of terms

ASSESSMENT

Probation Officers deliver an offender assessment service to Courts to assist in sentencing decisions, particularly where probation supervision or community service is being considered. There are two main types of offender assessment report:

PRE-SANCTION REPORT (PSR) These are also known as ‘probation reports’, assessing suitability for a community sanction and issues relevant to reducing reoffending. Building on the findings of structured risk assessment, probation reports outline the underlying factors in the offending behaviour, the offender’s attitude to the crime and motivation to change, and action to be taken to help prevent further offending.

COMMUNITY SERVICE REPORT (CSR) These reports assess suitability of an offender to do unpaid work in the community instead of going to prison.

SUPERVISION

PROBATION ORDERS

Probation Orders are one of a range of options open to courts when sentencing individuals found guilty of criminal behaviour. Offenders give an undertaking to the court that they will be of good behaviour; avoid further crime; adhere to the conditions of the order and to follow the directions of a supervising Probation Officer, who will monitor and help them to stay out of further trouble.

COMMUNITY SERVICE ORDERS

Instead of a prison sentence, convicted offenders over 16 years of age may, instead, be given the opportunity by the Court to perform unpaid work for the community. The legislation for Community Service Orders allows a Judge to sentence an offender to between 40 and 240 hours work. Any Order made must be completed within a year. Community Service is a direct alternative to a prison sentence and an Order will only be made by the Judge where a custodial sentence has first been considered.

COMMUNITY RETURN

The Community Return Programme is an incentivised scheme introduced in line with the recommendations of the Thornton Hall Project Review Group which provides for earned temporary release under which offenders who are assessed by the IPS are offered early temporary release in return for supervised community service. Officers of the Probation Service assess offenders as to suitability and motivation to complete the community work.

The scheme is applicable to suitably assessed prisoners who are serving sentences of more than one and less than eight years. Those participating are granted renewable temporary release having served at, or after, the 50% stage of their sentence with a condition of their release to undertake community service supervised by the Probation Service.

SUPERVISION DURING DEFERMENT OF PENALTY

Supervision during deferment of penalty is a judicial practice whereby the Court does not proceed to determine the appropriate penalty but instead postpones the decision to a further date, on condition that the offender complies with to the supervision of a Probation Officer and avoids reoffending.

POST RELEASE SUPERVISION

Under the Sex Offenders Act, 2001, Judges can sentence sex offenders to a period of probation supervision following their release from prison. Such offenders are monitored closely. During supervision, the Probation Officer focuses on the offence committed and its implications for public safety, helping the offender to see the past offending behaviour as a problem, identify risk factors and develop strategies and supports to ensure there is no repeat offending.

CONDITIONAL SUSPENDED OR PART-SUSPENDED SENTENCES

Judges can deal with a case by way of a suspended or part-suspended sentence with conditions of probation supervision. This means the Judge may:

- Issue a prison sentence of a number of months or years; and
- Suspend all or part of the sentence for a period of time, conditional on the offender remaining under the supervision of a Probation Officer for the specified time for which the custodial sentence is suspended.

SUPERVISED TEMPORARY RELEASE

The Probation Service supervises some prisoners on temporary release from custody (as provided for in the Criminal Justice Act, 1960 and the Criminal Justice (Temporary Release of Prisoners) Act, 2003) in the community with specific conditions aimed at helping with their reintegration in the community and to avoid further offending. Life sentence prisoners on release in the community are obliged to co-operate and comply with Probation Service supervision as a condition of temporary release. Such prisoners, in the normal course, remain subject to supervision for the remainder of their lives.

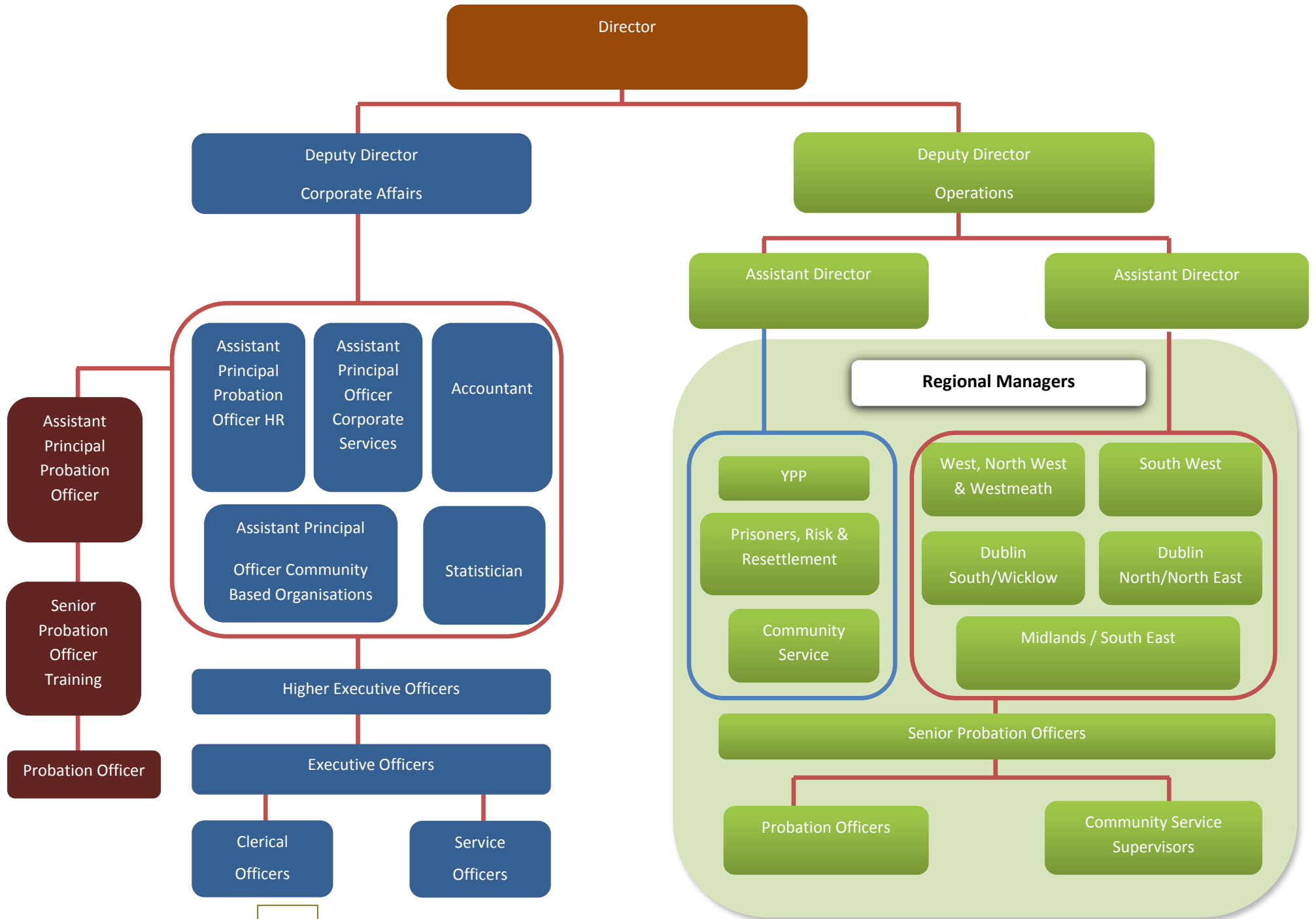
YOUNG PERSONS

In addition to the above, there are a variety of disposals managed by the Probation Service specific to young persons who offend, as outlined under the Children Act 2001, as amended. These include family conferencing. A Family Conference is based on principles of restorative justice which, in essence, means healing the harm done to victims, while holding the offender accountable for his or her actions. The aim of the Family Conference is to divert the young person who has accepted responsibility for his/her behaviour from court, conviction and custody, and from committing further offences.

ACTION TAKEN IN CASES OF NON-COMPLIANCE WITH COURT ORDERS

In cases where offenders on supervision fail to comply with the terms of any of the above supervision orders, they are returned to the relevant court to face the consequences. This can include imposition of an alternative penalty, up to and including a custodial sentence.

Probation Service Organisational Chart



Financial

FINANCIAL STATEMENT INCOME & EXPENDITURE 2012					
		BUDGET PROVISION	PROVISIONAL OUTTURN	SAVINGS	EXCESS
		€000	€000	€000	€000
VOTE 19	JANUARY- DECEMBER 2012				
F1	Salaries, Wages and Allowances	21,992	21,117	875	-
F2	Operational (Travel, Postal & Telecom, Office Premises, Office Machinery)	4,723	4,069	654	-
F3	Services to Offenders				
	Assistance to Voluntary Bodies (Current)	11,172	10,350	822	-
	Probation Centres (Capital)	-	-	-	-
F4	Community Service Order Scheme	2,284	2,053	231	-
TOTALS		40,171	37,589	2,582	0

FINANCIAL STATEMENT INCOME & EXPENDITURE 2011						
		BUDGET PROVISION	SUPPLEMENTARY	OUTTURN	SAVINGS	EXCESS
		€000	€000	€000	€000	€000
VOTE 19	JANUARY- DECEMBER 2011					
F1	Salaries, Wages and Allowances	22,524	(600)	21,883	41	-
F2	Operational (Travel, Postal & Telecom, Office Premises, Office Machinery)	4,923	(300)	4,599	24	-
F3	Services to Offenders					
	Assistance to Voluntary Bodies (Current)	11,522	(1,586)	9,796	140	-
F4	Community Service Order Scheme	2,284		2,058	226	-
TOTALS		41,253	(2,486)	38,336	431	0

Prompt Payment of Accounts Act 1997

The following information is provided in accordance with the Act within the guidelines issued by the Department of Enterprise, Trade and Employment. The Probation Service has procedures in place to ensure that all invoices are paid within the statutory time limit. While the procedures have been designed to ensure compliance with the Act, they only provide reasonable and not absolute assurance against material non-compliance with the Act.

These procedures operate in the financial period under review and, in the case of late payments, the relevant suppliers were notified and the interest due was paid to them.

In accordance with the prompt payment of Account Act, 1997, the following information is provided in respect of the financial period ending December 31st 2012:

(a) Payment Practices

The Probation Service makes payment to suppliers in accordance with the terms specified in the respective invoices or conditions specified in individual contracts, if appropriate. Since 2002 the standard terms are 30 days.

Late payments:

Invoice Amount	No. of Invoices	Amount of Interest Paid €
Under €317	1	5.54
Over €317	0	0
Total	1	5.54

Statistics

Overall	2010	2011	2012
Total number of Offenders dealt with in community over year ²		14,845	15,080
Total Court referrals to the Probation Service	8,934	9,347	8,790
Total number of persons referred from Courts to the Service ³	7,800	8,135	7,646

New Referrals From Court	2010	2011	2012
Probation (Pre-Sanction) Reports	5,470	5,299	4,921
Community Service Reports	1,960	2,577	2,377
Pre-Sanction Reports to consider Community Service	377	515	575
Orders without prior report	1,099	937	902
Family Conference	28	19	15

Completed Reports	2010	2011	2012
Probation (Pre-Sanction) Reports ⁴	10,501	10,710	9,817
Community Service Reports (Standard) ⁴	2,474	2,812	2,043
Community Service Reports (Same Day)		795	963
Parole Board - Assessment and Home Circumstances Reports	74	108	121
Repatriation Reports provided to the Department of Justice and Equality	18	20	14
Victim Impact Reports - Total number of reports completed	40	46	55

² This includes offenders being dealt with at the beginning of the year in addition to new referrals made during the year. This also includes referrals from IPS (including Community Returns) and repatriated offenders.

³ The number of orders active at a point in time is greater than the number of offenders as an offender can be subject to more than one order at a point in time.

⁴ This includes all progress reports requested from Court in addition to initial assessment reports. This does not include Same Day reports.

Statistics – Supervision

Supervision	2010	2011	2012
Orders for Supervision during year (Probation Orders)	2,733 ⁵	2,033	1,742
Orders for Supervision During Deferment of Penalty	1,965	1,882	1,695
Community Service Orders	1,972	2,738	2,569
Fully Suspended Sentence with Supervision		570	599
Part Suspended Sentence Supervision Orders	590	434	389
Post Release Supervision Orders	33	25	43
Other Orders ⁶		131	131
Number of life sentence prisoners supervised in the community	65	65	65
Number of sex offenders supervised in the community	158	173	209 ⁷

Statistics – Community Service

Community Service	2010	2011	2012
Referral for Community Service Reports	1,960	2,577	2,377
Pre-Sanction Reports to consider Community Service	377	515	575
Total Reports considering Community Service	2,337	3,092	2,952
Community Service Reports (Same Day)		795	963
Community Service Orders made	1,972	2,738	2,569
Total number of Community Service Hours ordered in lieu of custodial sentence	303,210	420,836	384,159
Total alternative sentence in years that would otherwise have been served	882	1,035	1,053 ⁸

⁵ Orders for Supervision in 2010 also include Fully Suspended Sentence with Supervision.

⁶ Other Orders includes various disposals under the Children Act 2001 (as amended).

⁷ Due to the extended nature of supervision of sex offenders there are more commencing supervision than completions thus an increase in those being supervised in the community.

⁸ Increase in alternative sentence due to a greater number of Circuit Court referrals.

Statistics – Community Returns and Prisons

Community Returns		2012
Number of offenders on Community Return scheme on December 31 st		105
Number of offenders that commenced Community Return over the year		299
Number of successful completions over the year		218
Prisons	2011	2012
Number of prisoners with/subject to PSSSO's in prison on December 31 st	812	733
Number of sex offenders in prison on December 31 st that have been in contact with the Probation Service.	336	353
Number of new prisoners in contact with Probation Service during 2012.	499	598

Statistics – Young Persons

New Referrals From Court	2010	2011	2012
Referral for Probation (Pre-Sanction) Reports	979	877	775
Referral for Community Service Reports	36	22	25
Pre-Sanction Reports to consider Community Service	30	15	4
Orders without prior report	41	13	41
Family Conference	28	19	15
Supervision	2010	2011	2012
Probation Orders	491	350	313
Orders for Supervision During Deferment of Penalty	361	449	340
Community Service Orders	30	44	35
Fully Suspended Sentence with Supervision		20	17
Part Suspended Sentence Supervision Orders Made	44	44	54
Other Orders ⁹		128	129

⁹ Other Orders includes various disposals under the Children Act 2001 (as amended).

Age / Gender breakdown of new referrals 2012

	Gender			%
Age Category	Female	Male	Total	Female
12-17	67	643	710	9.4%
18-24	419	2,965	3,384	12.4%
25-34	461	2,354	2,815	16.4%
35-44	223	1,049	1,272	17.5%
45-54	64	374	438	14.6%
>54	31	140	171	18.1%
Total	1,265	7,525	8,790	14.4%

Supervision – Female offenders

Supervision	2011	2012
Probation Orders	378	325
Orders for Supervision During Deferment of Penalty	74	281 ¹⁰
Community Service Orders	210	229
Fully Suspended Sentence with Supervision	55	77
Part Suspended Sentence Supervision Orders	14	31
Other Orders ¹¹	13	9
Total	744	952

¹⁰ Figure for supervision during deferment of penalty for female offenders is not comparable with 2011 due to different recording methodology.

¹¹ Other Orders includes various disposals under the Children Act 2001 (as amended).

Referrals by Venue – 2012

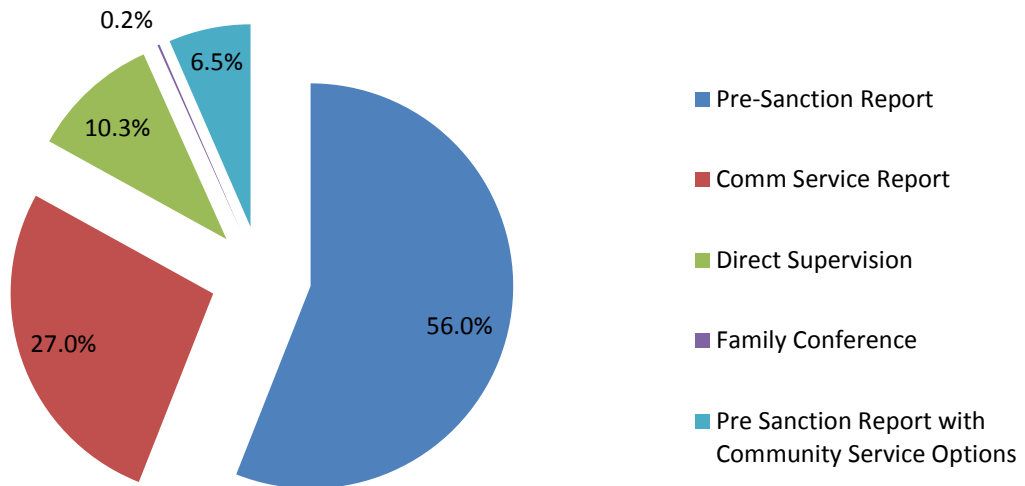
Court Venue (Dublin)	Circuit and Higher Courts	Circuit Court Appeals from District Court	District Court	Total
Dublin (CCJ)	390	114	1185	1689
Juvenile (Smithfield)	1	.	293	294
Blanchardstown	.	.	253	253
Chancery Street (Bridewell)	1	.	240	241
Dunlaoghaire-District	.	.	236	236
CloverHill	1	.	208	209
Tallaght	.	.	151	151
Swords	.	1	123	124
Balbriggan	.	.	41	41
Drug Treatment Court	.	1	33	34
Other Dublin Courts	.	.	3	3
Total Dublin (City and County)	393	116	2766	3275

Note: Courts with less than 12 referrals in 2012 have been omitted from the list below

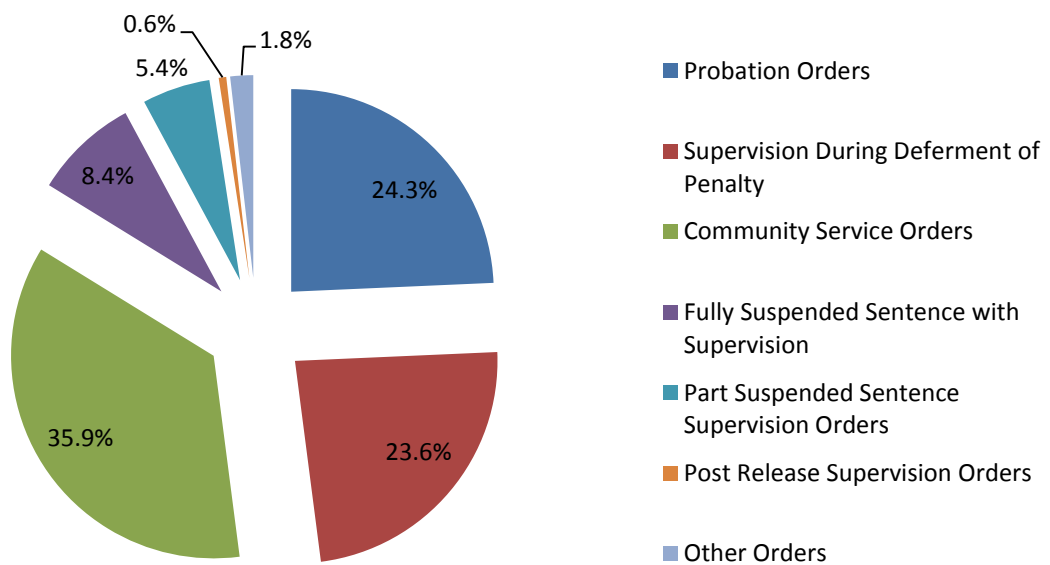
Court Venue	Circuit and Higher Courts	Circuit Court Appeals from District Court	District Court	Total
Cork	159	1	582	742
Limerick	42	5	285	332
Naas	65	12	147	224
Dundalk	62	.	148	210
Portlaoise	22	9	175	206
Letterkenny	42	.	156	198
Tullamore	39	12	134	185
Waterford City	57	3	125	185
Galway City	64	3	99	166
Drogheda	.	.	154	154
Kilkenny	38	4	105	147
Cavan	19	.	108	127
Ennis	20	6	97	123
Wexford	40	1	73	114
Bray	2	.	108	110
Nenagh	19	8	79	106
Wicklow	53	.	42	95
Carlow	26	3	61	90
Mullingar	31	9	46	86
Clonmel	41	4	37	82
Monaghan	17	5	60	82
Sligo	28	1	45	74
Trim	36	5	30	71
Longford	21	3	46	70

Court Venue	Circuit and Higher Courts	Circuit Court Appeals from District Court	District Court	Total
Athlone	0	1	66	67
Thurles	0	.	67	67
Carrickmacross	2	.	59	61
Virginia	.	.	59	59
Navan	.	.	55	55
Tralee	36	.	16	52
Gorey	.	.	50	50
Midleton	.	1	48	49
Castlebar	22	.	26	48
Newcastlewest	1	1	45	47
Tipperary	.	.	47	47
Kilmallock	.	.	46	46
Mallow	.	.	39	39
Arklow	.	.	35	35
Birr	.	.	35	35
Cashel	.	.	33	33
Roscommon	13	8	12	33
Ballinasloe	.	.	31	31
Dungarvan	.	.	31	31
Buncrana	.	.	30	30
Edenderry	.	.	30	30
Fermoy	.	.	30	30
Listowel	1	.	28	29
Bandon	.	1	26	27
Kilcock	.	.	27	27
Clonakilty	.	1	24	25
Carrick-on-Suir	.	.	23	23
Kilrush	.	.	23	23
Youghal	.	.	21	21
Athy	.	.	19	19
Ballyconnell	.	.	19	19
Carrick-on-Shannon	12	.	6	18
Bantry	.	.	17	17
Donegal	6	1	10	17
Ballina	.	.	16	16
Kinsale	.	.	16	16
Gort	.	.	15	15
Tuam	.	.	15	15
Belmullet	.	.	14	14
Killaloe	.	.	14	14
Kells	.	.	13	13
Clones	.	.	12	12
Cobh	.	.	12	12

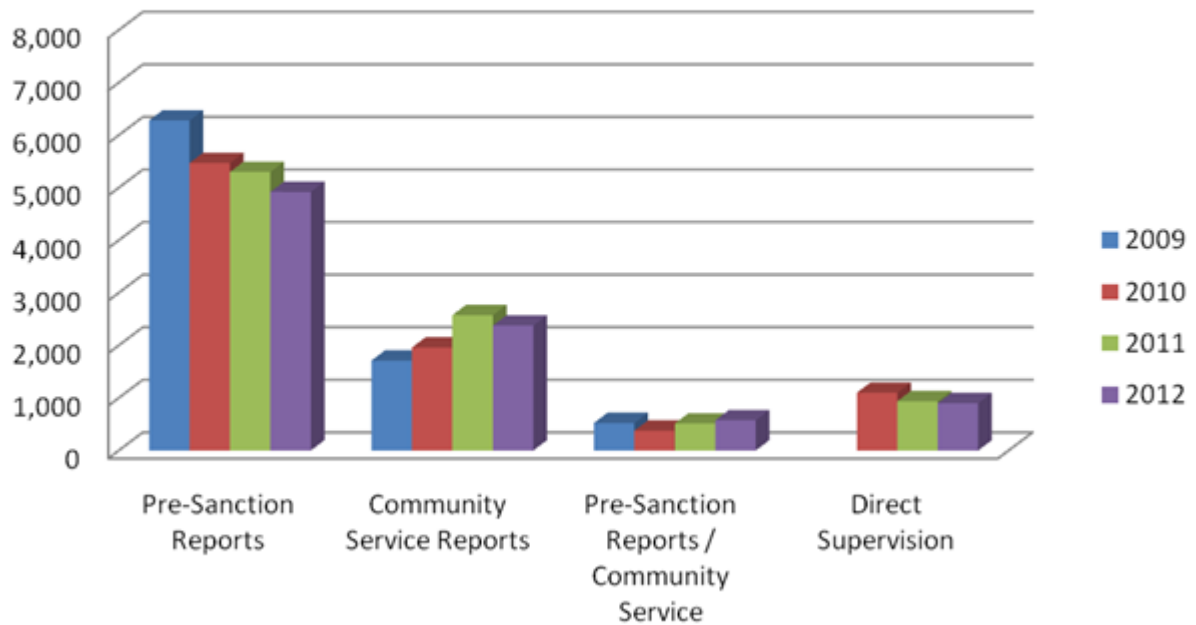
Breakdown of New Referrals 2012



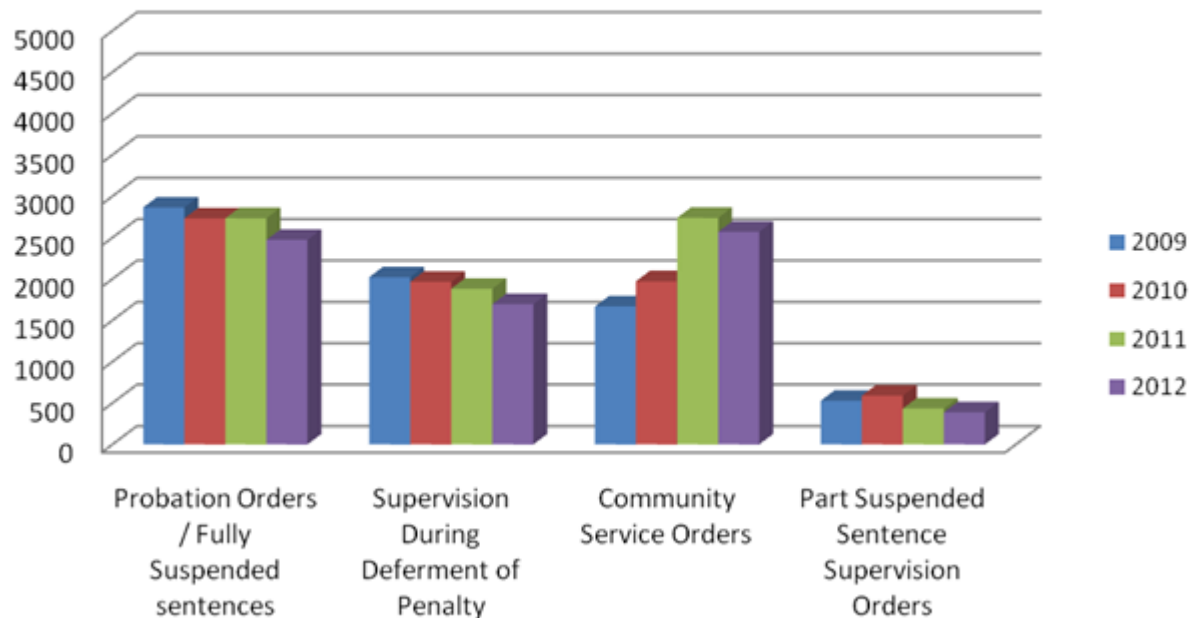
Breakdown of Court Orders 2012



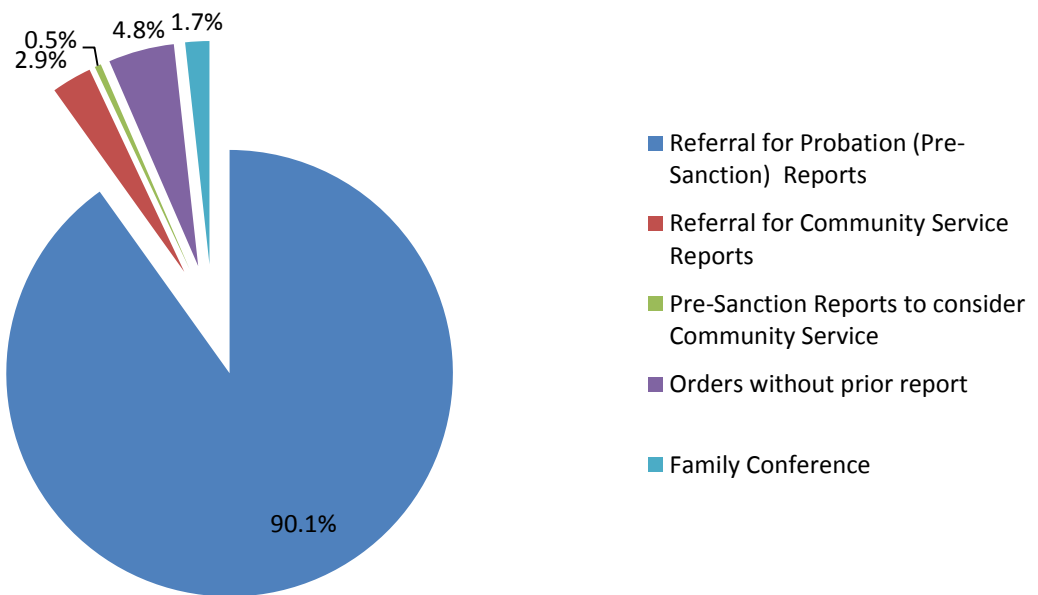
Trend of Offender Assessment Reports Requested
2009 to 2012



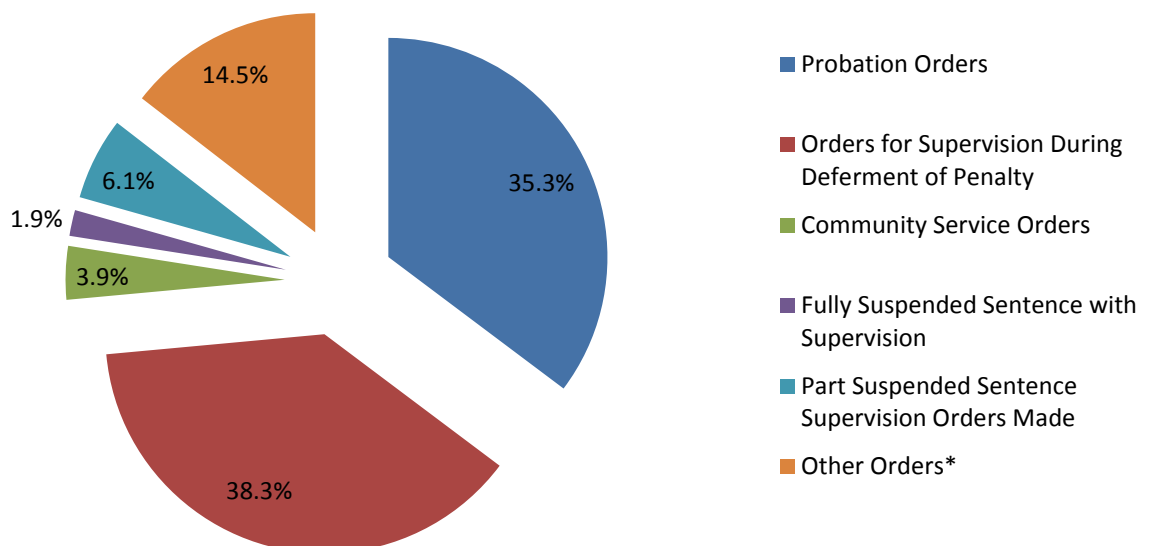
Trend of Orders Made by Year
2009 to 2012



Breakdown of New Referrals (Young Persons) 2012

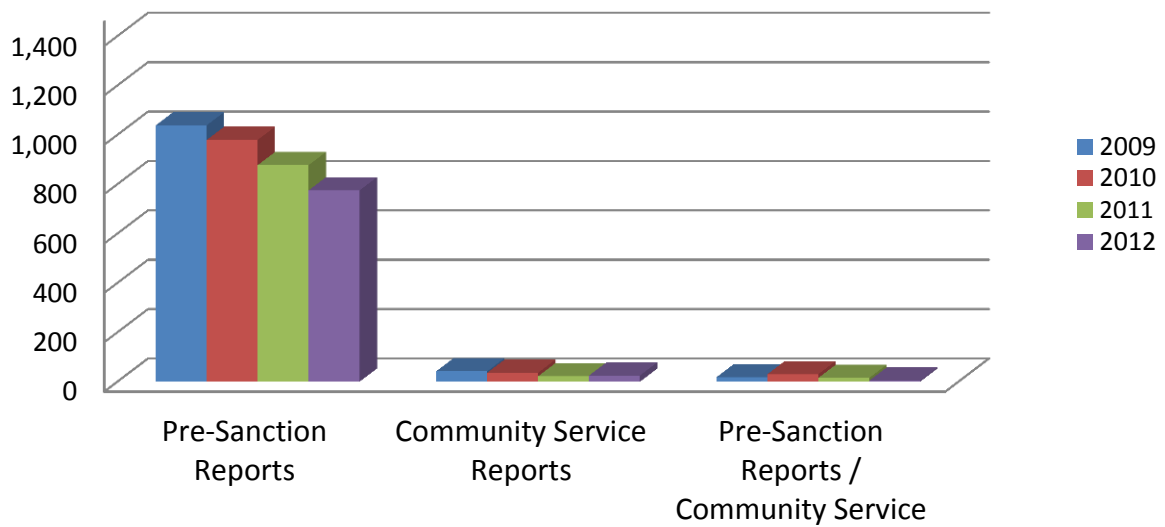


Breakdown of Court Orders (Young Persons) 2012

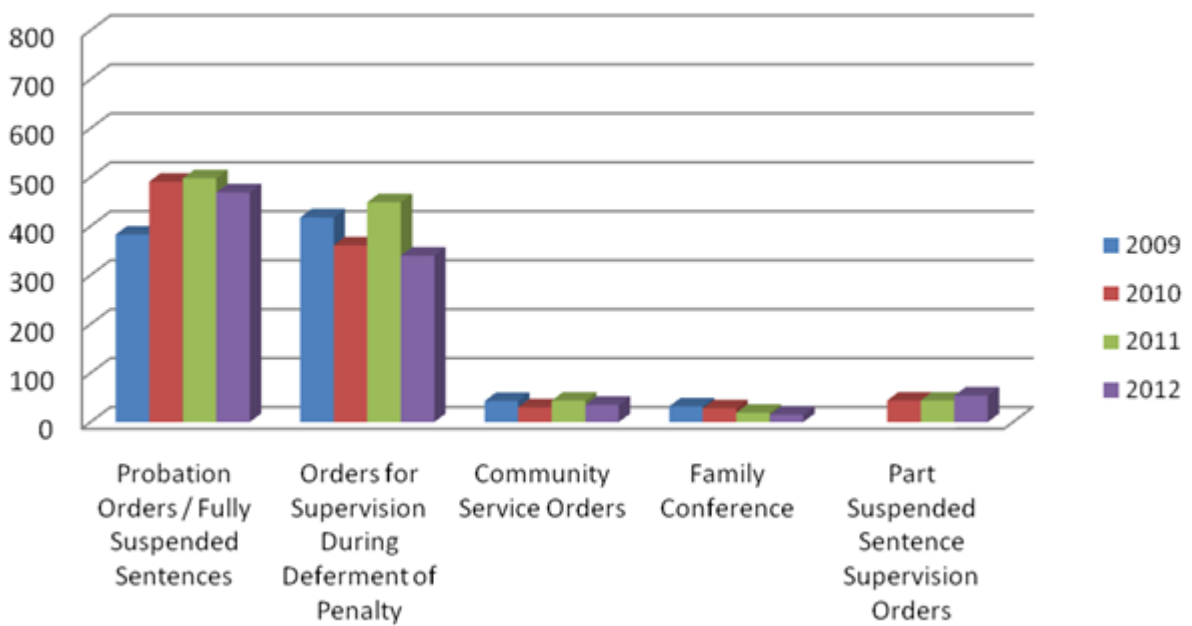


* Other Orders includes various disposals under the Children Act 2001 (as amended).

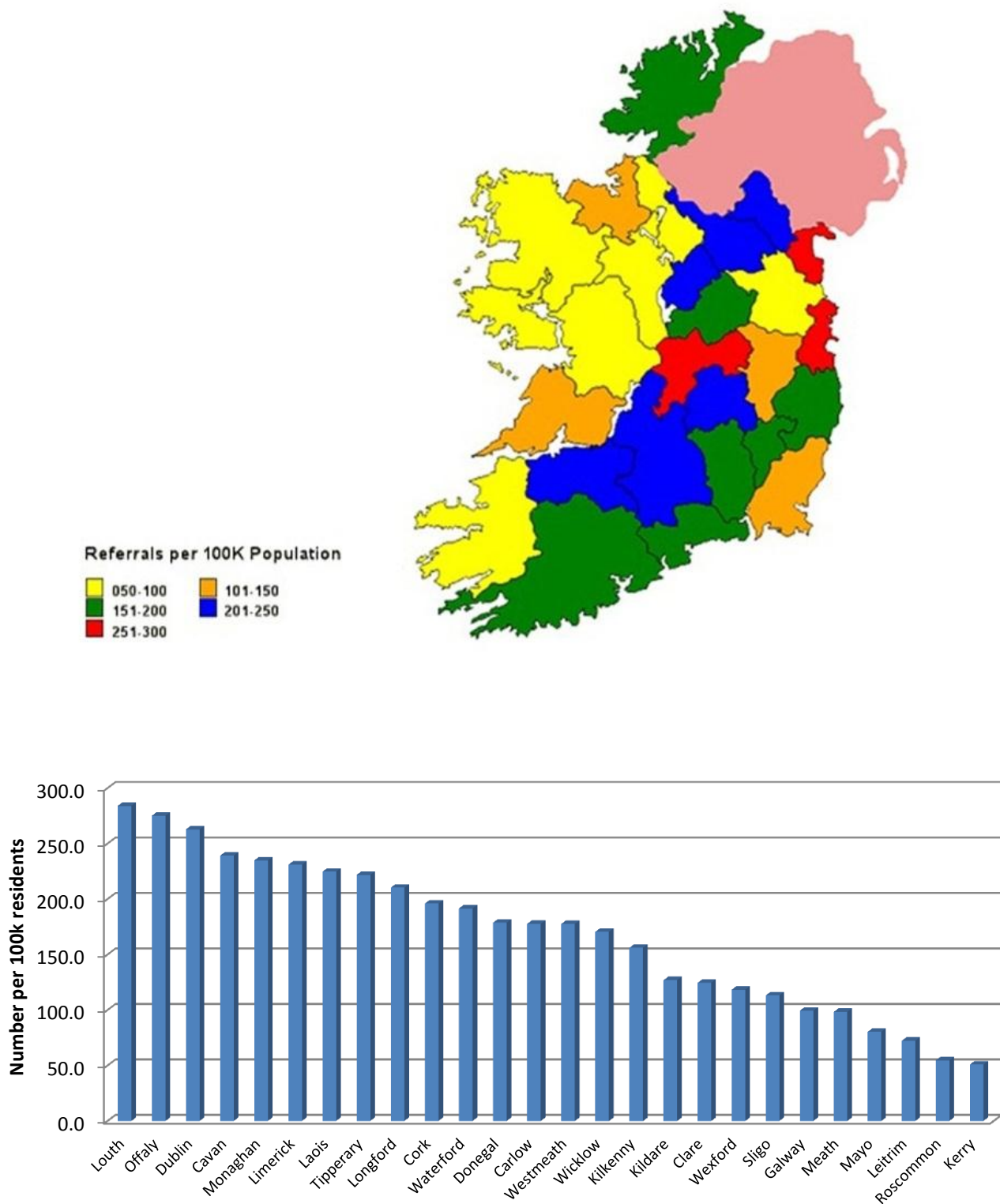
Trend of Offender Assessment Reports Requested (Young Persons) 2009 to 2012



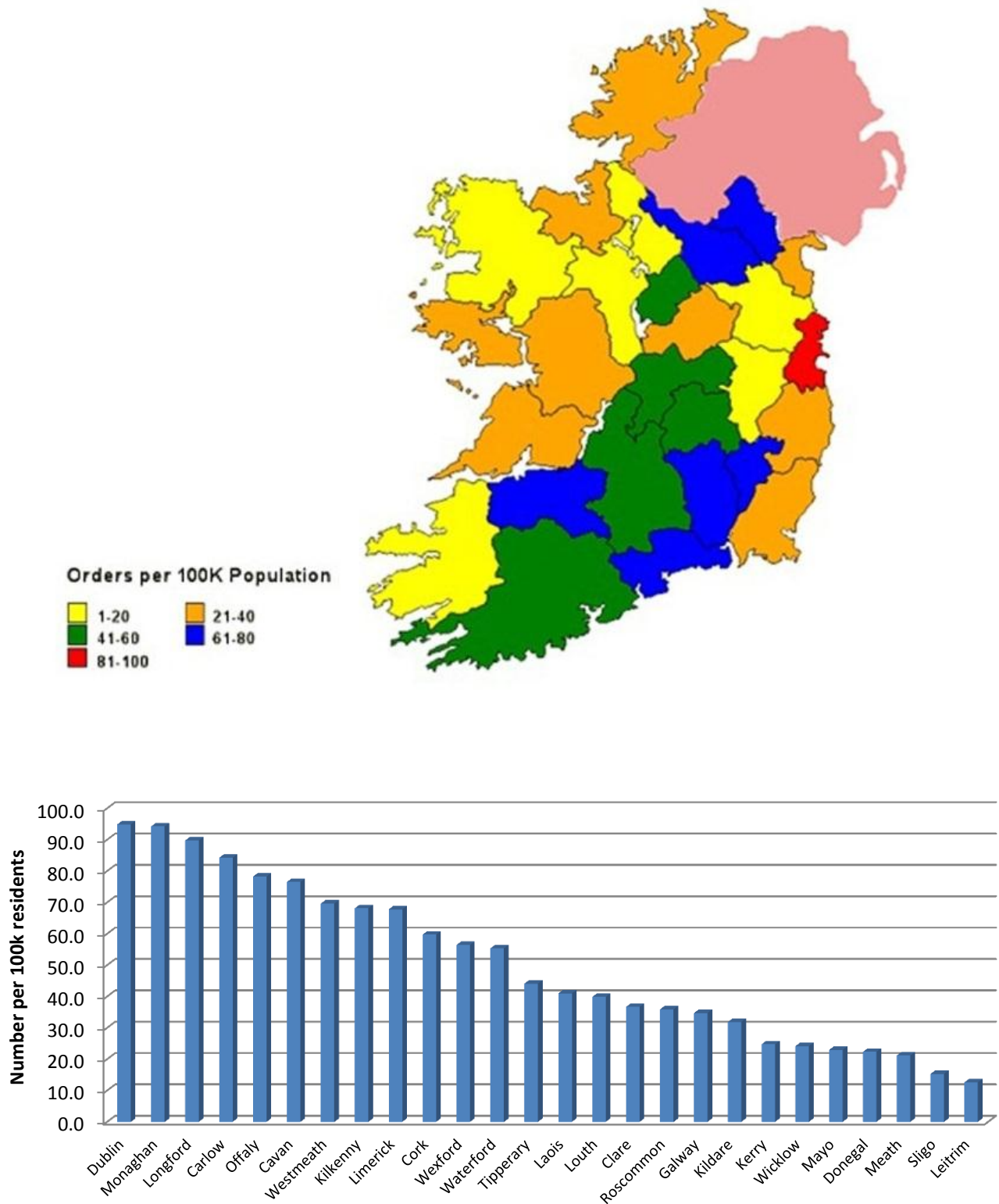
Trend of Orders Made by Year (Young Persons) 2009 to 2012



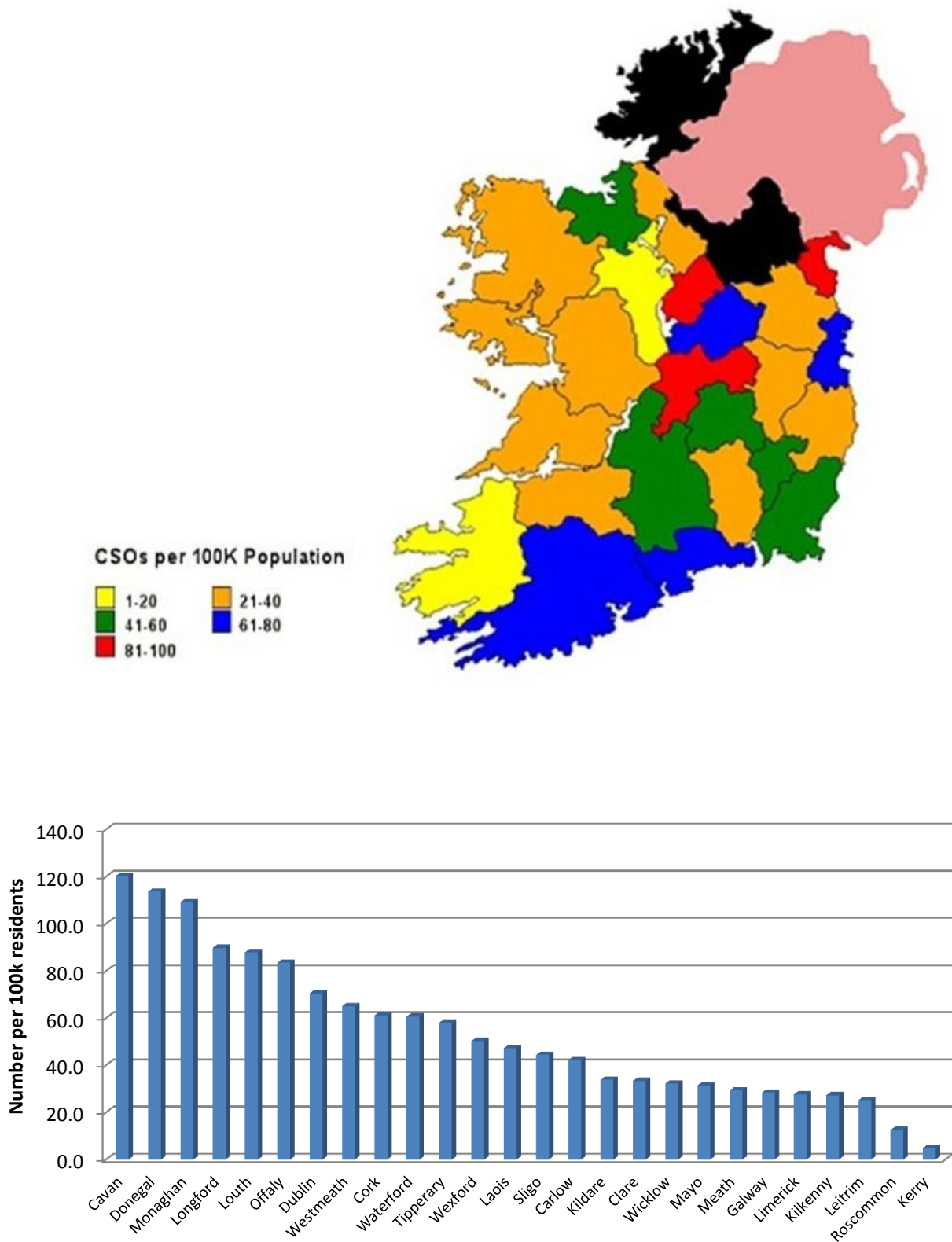
Map of New Referrals in 2012 per 100,000 residents



Map of Probation Orders in 2012 per 100,000 residents



Map of Community Service Orders in 2012 per 100,000 residents



Community Based Organisations in receipt of funding support through the Probation Service

(1). Adventure Sports Project (YPP)	
Address	School on Stilts, Rutland Street, Dublin 1
Telephone:	01 836 33965
Fax:	01 855 0065
Email:	aspyouthproject@gmail.com
Website	

3). Aiseiri Cahir	
Address	Townspark, Cahir, Co Tipperary
Telephone:	052 741 166
Fax:	052 744 2250
Email:	infocahir@aiseiri.ie
Website	www.aiseiri.ie

(5). Aislinn(YPP)	
Address	Ballyragget, Co Kilkenny
Telephone:	056 883 3777
Fax:	056 883 3780
Email:	breda@aislinncentre.com
Website	www.aislinn.ie

(7). Athy Alternative Project	
Address	Community Service Centre, Nelson Street, Athy, Co Kildare
Telephone:	059 863 2354
Fax:	059 8632067
Email:	billyaap@eircom.net
Website	

(9). Ballymun Youth Action Project	
Address	Horizons Centre, Balcurris Road, Ballymun, Dublin 11
Telephone:	01 842 8071
Fax:	01 846 7901
Email:	nfo@byap.ie
Website	www.byap.ie

(11). Bushypark (Clarecare)	
Address	Bushypark House, Bushypark, Ennis, Co Clare
Telephone:	056 684 0944
Fax:	065 684 0450
Email:	bushyparkhouse@clarecare.ie
Website	www.bushypark.ie

(2). Aftercare Recovery Group	
Address	48 Seville Place, Dublin 1
Telephone:	01 855 7611
Fax:	01 855 7611
Email:	tkacrg@gmail.com
Website	www.acrg.ie

(4). Aiseiri Wexford	
Address	Roxborough, Wexford, Co. Wexford
Telephone:	053 914 1818
Fax:	053 914 6004
Email:	wexford@aiseiri.ie
Website	www.aiseiri.ie

(6). Ana Liffey Project	
Address	48 Middle Abbey Street, Dublin 1
Telephone:	01 878 6899
Fax:	01 878 6828
Email:	marcuskeane@aldp.ie
Website	www.aldp.ie

(8). Ballinasloe Training Workshop	
Address	Canal House, Harbour Road, Ballinasloe, Co Galway
Telephone:	090 964 3231
Fax:	090 964 4273
Email:	canalhouse@eircom.net
Website	

(10). Bridge Project	
Address	Unit 3 Business Centre, 124 Parnell Street, Dublin 1
Telephone:	01 878 0901
Fax:	01 878 0896
Email:	manager@bridge.ie
Website	

(12). Candle Community Trust (YPP)	
Address	PO Box 1145, Lynch's Lane, Ballyfermot, Dublin 10
Telephone:	01 626 9111/2
Fax:	01 626 9379
Email:	cashe@candletrust.ie
Website	www.candletrust.ie

(13). CeimarCheim(YPP)	
Address	Unit 5 Shannon Development Units, Knockalisheen Road, Moyross, Co Limerick
Telephone:	061 322 122
Fax:	061 322 203
Email:	slatteryelaine@gmail.com
Website	www.ceimarcheim.org

(15). Churchfield Community Trust	
Address	107-109 Knockfree Avenue, Churchfield, Cork City, Co Cork
Telephone:	021 421 0348
Fax:	021 421 0034
Email:	cctrust@eircom.net
Website	www.cctrust.ie

(17). Cork Alliance Centre	
Address	Robert Scott House, 6 Patrick's Quay, Cork City, Co Cork
Telephone:	021 455 7878
Fax:	021 455 7880
Email:	corkalliancecentre@eircom.net
Website	www.corkalliancecentre.com

(19). Cox's Demesne (YPP)	
Address	The House, 15-16 Oakland Park, Dundalk, Co Louth
Telephone:	042 933 0432
Fax:	042 933 1599
Email:	coxscycp@iol.ie
Website	

(21). CuanMhuireAthy	
Address	CuanMhuireAthy, Milltown, Athy, Co. Kildare
Telephone:	059 863 1493
Fax:	059 863 8765
Email:	athy@cuanmhuire.ie
Website	www.cuanmhuire.ie

(23). CuanMhuireCoolarne	
Address	Coolarne, Turloughmore, Co Galway
Telephone:	091 79 7102
Fax:	091 78 7458
Email:	coolarne@cuanmhuire.ie
Website	www.cuanmhuire.ie

(14). CeimEile (Aiseiri)	
Address	1 Glencarra, Ballybeg, Waterford, Co Waterford
Telephone:	051 370 007
Fax:	
Email:	gwhelan@aiseiri.ie
Website	www.aiseiri.ie

(16). Coolmine Therapeutic Community	
Address	Ashleigh House, The Stables, Damastown, Dublin 15
Telephone:	01 640 4087
Fax:	01 640 4085
Email:	info@coolminetc.ie
Website	www.coolminetc.ie

(18). Cornmarket Project – Wexford Local Development	
Address	9 Mallin Street, Cornmarket, Wexford, Co Wexford
Telephone:	053 915 5800
Fax:	053 912 1024
Email:	pdelaney@wld.ie
Website	www.wexfordpartnership.ie

(20). Crinan	
Address	72 Sean McDermott Street, Dublin 1
Telephone:	01 855 8792
Fax:	01 855 2320
Email:	info@crinanyp.org
Website	www.crinanyp.org

(22). CuanMhuireBruree	
Address	Bruree, Co Limerick
Telephone:	063 90555
Fax:	063 90555
Email:	bruree@cuanmhuire.ie
Website	www.cuanmhuire.ie

(24). CuanMhuireFarnanes	
Address	Farnanes, Co Cork
Telephone:	021 733 5994
Fax:	021 733 6377
Email:	farnanes@cuanmhuire.ie
Website	www.cuanmhuire.ie

(25). Daughters of Charity Community Services (YPP)	
Address	8/9 Henrietta Street, Dublin 1
Telephone:	01 887 4100
Fax:	01 872 3486
Email:	info@doccs.ie
Website	www.doccs.ie

(27). Educational Trust	
Address	C/o PACE, 7 Upper Leeson Street, Dublin 2
Telephone:	01 660 2870
Fax:	01 660 2864
Email:	headoffice@paceorganisation.ie
Website	www.paceorganisation.ie or www.niacro.co.uk

(29). Fusion CPL	
Address	Cherry Orchard Health Centre, Cherry Orchard Grove, Dublin 10
Telephone:	01 623 1499
Fax:	01 623 1518
Email:	info@fusioncpl.ie
Website	www.fusioncpl.ie

(31). Grattan House Project	
Address	St Nicholas Church, Cove Street, Cork City, Co Cork
Telephone:	021 483 6700
Fax:	021 484 5146
Email:	liz.grattanproject@gmail.com
Website	

(33). Job Sampling Initiative	
Address	St Brigid's Family and Community Centre, 37 Lower Yellow Road, Waterford, Co Waterford
Telephone:	051 371 830
Fax:	
Email:	lobrien@wap.ie
Website	www.wap.ie/job-sampling-initiative.aspx

(35). Kilkenny Employment for Youth	
Address	Garden Row, Off High Street, Kilkenny, Co Kilkenny
Telephone:	056 776 2774
Fax:	056 775 1144
Email:	key1@eircom.net
Website	

(26). Dochas don Oige(YPP)	
Address	Liosban Industrial Estate, Tuam Road, Galway, Co Galway
Telephone:	091 77 0887
Fax:	091 77 0899
Email:	dochasgalway@eircom.net
Website	

(28). Fellowship House	
Address	Fellowship House, Spur Hill, Doughcloyne, Togher, Cork City, Co Cork
Telephone:	021 454 5894
Fax:	021 434 4471
Email:	fellowship@eircom.net
Website	www.taborlodge.ie

(30). GROW	
Address	National Support Office, 6 Forrest Mews, Forrest Road, Swords, Co Dublin
Telephone:	01 840 8236
Fax:	01 840 8244
Email:	info@grow.ie
Website	www.grow.ie

(32). Guild of St Philip Neri	
Address	St Vincent De Paul, 91-92 Sean McDermott Street, Dublin 1
Telephone:	01 855 0022
Fax:	01 855 9168
Email:	info@svpdublin.ie
Website	www.svp.ie

(34). Kerry Adolescent Counselling(YPP)	
Address	Balloonagh, Tralee, Co Kerry
Telephone:	066 718 1333
Fax:	066 718 1353
Email:	info@kerryadolescentcounselling.ie
Website	www.kerryadolescentcounselling.ie

(36). IASIO	
Address	Block 3, Grove Court, Grove Road, Blanchardstown, Dublin 15.
Telephone:	01 874 7232
Fax:	
Email:	prichardson@iasio.ie
Website	www.iasio.ie

(37). Le Cheile (YPP)	
Address	24 Tivoli Terrace South, Dun Laoghaire, Co. Dublin
Telephone:	01 214 4350
Fax:	
Email:	info@lecheile.ie
Website	www.lecheile.ie

(39). Matt Talbot Adolescent Services (YPP)	
Address	Rockview, Trabeg Lawn, Douglas, Co Cork
Telephone:	021 489 6400
Fax:	021 489 6419
Email:	infotrabeg@mtas.ie
Website	www.mtas.ie

(41). Matt Talbot Community Trust	
Address	Rear of Assumption Church, Kylemore Road, Dublin 10
Telephone:	01 626 4899
Fax:	01 623 4021
Email:	info@MattTalbot.org
Website	

(43). Nenagh Community Reparation	
Address	Connolly Street, Nenagh, Co Tipperary
Telephone:	067 415 65
Fax:	067 415 65
Email:	ncrp@eircom.net
Website	www.nenaghreparation.org

(45). PALLS	
Address	Unit 2, Docklands Business Park, Dock Road, Limerick, Co Limerick
Telephone:	061 608 180
Fax:	061 608 187
Email:	jenniferhannon@palls.ie
Website	www.palls.ie

(47). SAOL Project	
Address	58 Amiens Street, Dublin 1
Telephone:	01 855 3391
Fax:	01 855 3395
Email:	admin@saolproject.ie
Website	www.saolproject.ie

(38). MAG	
Address	Multi-Agency Group on Homeless Sex Offenders, Homeless Agency, Parkgate Hall, 6-9 Conyngham Road, Dublin 8
Telephone:	01 703 6100
Fax:	
Email:	
Website	

(40). Matt Talbot Adolescent Services (YPP)	
Address	Cara Lodge Residential Treatment Centre, Ahiohill, Enniskeane, Co Cork
Telephone:	023 883 9000
Fax:	023 883 9590
Email:	infocaralodge@mtas.ie
Website	www.mtas.ie

(42). Merchants Quay Project	
Address	4 Merchants Quay, Dublin 8
Telephone:	01 679 0044
Fax:	01 679 3738
Email:	info@mqi.ie
Website	www.mqi.ie

(44). PACE	
Address	Block 3, Grove Court, Grove Road, Blanchardstown, Dublin 15.
Telephone:	01 823 1000
Fax:	01 823 1022
Email:	headoffice@paceorganisation.ie
Website	www.paceorganisation.ie

(46). Restorative Justice Services	
Address	Village Green, Tallaght, Dublin 24
Telephone:	01 451 5022
Fax:	01 451 5025
Email:	office@rjs.ie
Website	www.rjs.ie

(48). Southill Outreach (YPP)	
Address	The Factory, Southside Youthspace, Galvone Industrial Estate, Limerick, Co Limerick
Telephone:	061 603 002
Fax:	
Email:	info@southilloutreach.ie
Website	

(49). Stepping Out Athlone	
Address	National Learning Network, Belhavel, Golden Island, Athlone, Co Westmeath
Telephone:	090 644 1267
Fax:	090 647 9290
Email:	steppingout@eircom.net
Website	

(51). Tallaght Probation Project	
Address	Courthouse Square, Westpark, Tallaght, Dublin 24
Telephone:	01 427 0600
Fax:	01 427 0649
Email:	project@tpp.ie
Website	www.tpp.ie

(53). Tower Programme	
Address	Cusack House, St Mark's Lane, Neilstown Road, Clondalkin, Dublin 22
Telephone:	01 623 6230
Fax:	01 623 6237
Email:	info@towerprogramme.ie
Website	www.thetowerprogramme.org

(55). TREO	
Address	34 Tycor Business Centre, Tycor, Waterford, Co Waterford
Telephone:	051 379 740
Fax:	051 379 740
Email:	admin@treoportlairie.ie
Website	www.treoportlairie.ie

(57). TusNua	
Address	136 Nth Circular Road, Dublin 7
Telephone:	01 453 7111
Fax:	01 453 7551
Email:	depaul@depaulireland.org
Website	www.depaulireland.org

(59). Westview Day Centre (YPP)	
Address	Westview House, 17 Audley Place, Cork
Telephone:	021 450 2112
Fax:	021 450 9877
Email:	Liz.walsh@foroige.ie
Website	

(50). Tabor Lodge	
Address	Ballindeasig, Belgooly, Co Cork
Telephone:	021 488 7110
Fax:	021 488 7377
Email:	taborlodge@eircom.net
Website	www.taborlodge.ie

(52). Tivoli Training Centre	
Address	24 Tivoli Terrace South, Dun Laoghaire, Co Dublin
Telephone:	01 284 1028
Fax:	01 280 2699
Email:	info@tivolitrainingcentre.ie
Website	www.tivolitrainingcentre.ie

(54). Trail	
Address	12-13 Berkley Street, Dublin 7.
Telephone:	01 830 8335
Fax:	01 830 8335
Email:	
Website	

(56). Tuam Community Training Workshop	
Address	Vicharschoraland, Tuam, Co Galway
Telephone:	093 28 115
Fax:	093 25 673
Email:	tctc@eircom.net
Website	Vicharschoraland, Tuam, Co Galway

(58). Waterford Area Partnership U-Casadh Project	
Address	Cairdeas Building, Belmont, Ferrybank, Co Waterford
Telephone:	051 841 740
Fax:	051 853 153
Email:	info@wap.ie
Website	www.wap.ie

(60). Wexford Centre Project (YPP)	
Address	5/7 Upper O'Connell Street, Dublin 1
Telephone:	01 888 1075
Fax:	01 855 7207
Email:	wexfordcentre@eircom.net
Website	www.wexfordcentreproject.com

(61). WHAD (YPP)	
Address	Orchard Community Centre, Cherry Orchard Grove, Dublin 10
Telephone:	01 620 9160
Fax:	01 626 2799
Email:	whad@cherryorchard.ie
Website	

(62). WRENS (YPP)	
Address	Killinarden Enterprise Park, Killinarden, Tallaght, Dublin 24
Telephone:	01 466 4275
Fax:	01 466 4291
Email:	info@kdppg.ie
Website	www.kdppg.ie

Margadh an Fhéir, Margadh na Feirme, Baile Átha Cliath 7.
Haymarket, Smithfield, Dublin 7.

Tel: +353-(0)1 817 3600 *Fax:* +353-(0)1 872 2737

www.probation.ie